

724 ROCKCLIFFE PLACE, KELOWNA

Presented by

Jane Hoffman

Personal Real Estate Corporation



JANE HOFFMAN

REALTY



724 ROCKCLIFFE PLACE, KELOWNA

The ease of penthouse-styled living from a luxurious single-level residence. Sweeping lake & city views provide an inspiring backdrop, while the lock & leave lifestyle within this prestigious gated community is designed for effortless living.

Custom built by Frame Custom Homes, no detail has been overlooked. The expansive open-concept design blends sophisticated living & entertaining spaces, with an effortless transition to the concrete pool, covered patio, & outdoor lounging areas.

At the heart of the home is a stunning chef-inspired kitchen featuring a beautiful honed Dekton island, custom cabinetry, & a generous walk-in pantry. Thoughtfully positioned to capture the breathtaking views, the primary retreat offers custom built-ins within the walk-in closet & a stunning spa-inspired ensuite designed for relaxation and privacy. Offering 3 bedrooms & 3 bathrooms, this residence is perfectly suited for those seeking luxury without compromise.

The oversized double garage features epoxy flooring & is wired for heat, while the expansive driveway easily accommodates 4 guest vehicles. A 5-foot crawl space houses the mechanical systems while providing exceptional storage rarely found in single-level homes.

Designed to age in place without sacrificing privacy, elegance, or independence, this exceptional property backs directly onto Knox Mountain trails & is just minutes from downtown Kelowna amenities. The privacy of an estate home. The ease of a lock-and-leave lifestyle home.

DETAILS

Address	724 Rockcliffe Place, Kelowna, BC, V1V 2Y3	Bedrooms	3
City	Kelowna	Bathrooms	3
		Finished Area	2,641 Sq. Ft.

SPECIFICATIONS

Lot Size	0.44 Acres	Zoning	RU1
Water	Municipal	Legal Description	STRATA LOT 37, PLAN KAS3162, SECTION 30, TOWNSHIP 26, OSOYOOS DIV OF YALE LAND DISTRICT
Sewer	Connected	Ownership	Freehold, Bare Land Strata
Features	Easy Access, Landscaped, Near Park, Paved, Views, Private, Sprinklers in Ground		
View	Lake, Mountains, City, Water, Valley, Panoramic		

BUILDING FEATURES

Finished Area	2,641 Sq. Ft.	Fireplace	1 Fireplace (Gas)
Year Built	2021	Parking	2 Garage Spaces Attached, Garage, Additional Parking, On Site, Oversized Strata Parking Type:Part of Strata/Assoc Lot
Storeys	1	Construction	Stone, Wood Frame, Fiber Cement
Pool	Pool, In Ground	Foundation	Concrete Perimeter
A/C	Central Air	Exterior Features	Private Yard, Sprinkler System
Heating	Forced Air, Natural Gas	Basement	Crawl Space
Interior Features	Kitchen Island, High Ceilings, Pantry, Central Vacuum, Instant Hot Water		
Monthly Fees	\$319.46		

ROOM SIZES

Main Level	Lower Level
Mud Room: 6'3" x 17'11"	Storage Room: 25'11" x 39'5"
Foyer: 6'3" x 12'1"	
Living Room: 19'9" x 26'10"	
Primary Bedroom: 18'6" x 14'4"	
Laundry: 5'4" x 9'10"	
Kitchen: 19'9" x 12'9"	
Pantry: 6'3" x 9'1"	
Bedroom: 14'3" x 16'1"	
Bedroom: 11'2" x 14'8"	
5-Piece Ensuite Bath: 10'8" x 16'4"	
3-Piece Bathroom: 9'6" x 10'6"	
2-Piece Bathroom: 5'4" x 5'4"	







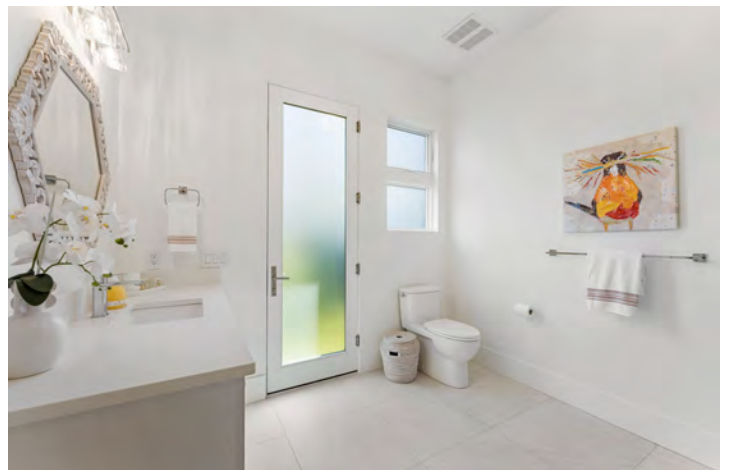


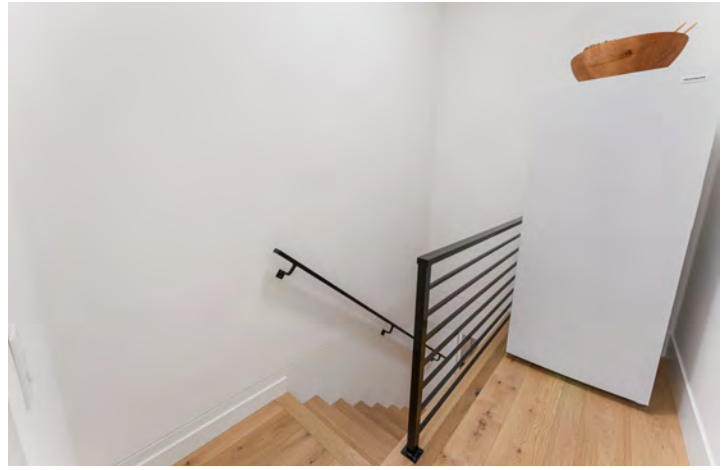












724 Rockcliffe Pl, Kelowna, BC

Main Floor Exterior Area 2640.69 sq ft
Interior Area 2490.89 sq ft
Excluded Area 611.66 sq ft



PREPARED: 2026/06/03

While regions are excluded from total floor area in iGUIDE floor plans. All room dimensions and floor areas must be considered approximate and are subject to independent verification.

724 Rockcliffe Pl, Kelowna, BC

Lower Level (Below Grade) Exterior Area 150.52 sq ft
Excluded Area 2385.02 sq ft



PREPARED: 2026/06/03

While regions are excluded from total floor area in iGUIDE floor plans. All room dimensions and floor areas must be considered approximate and are subject to independent verification.

EXCEPTIONAL FEATURES

- Award-worthy architectural residence offering 2,641 sq. ft. of luxurious single-level living within the secure gated community of Highpointe
- Custom built by Frame Custom Homes with a timeless blend of classic craftsmanship and modern design, featuring clean architectural lines, exceptional room proportions, and a warm, neutral palette throughout
- Designed to embrace Okanagan indoor-outdoor living, with expansive sliding doors creating a seamless connection between the great room, dining area, covered terrace, pool deck, and panoramic views
- Unobstructed views of Okanagan Lake, downtown Kelowna, the bridge, surrounding mountains, and city lights provide a spectacular backdrop from the principal living spaces and outdoor entertaining areas
- Resort-inspired outdoor living features a heated concrete pool, expansive patio and lounge areas, motorized sunshade, frameless glass railings, multiple natural gas connections, and beautifully landscaped low-maintenance grounds
- White oak hardwood flooring by Koeda Hardwood Floors extends throughout the home, complemented by custom Norelco cabinetry, sophisticated lighting design, wood soffit detailing, and premium materials selected for both beauty and longevity
- The award-calibre kitchen showcases refined contemporary design with honed Dekton surfaces, professional-grade KitchenAid appliances, extensive storage solutions, and a fully equipped butler's pantry
- Luxurious spa-inspired bathrooms feature heated tile floors, custom floating vanities, designer fixtures, and thoughtfully curated finishes
- Hidden motorized blinds, Lutron lighting controls, integrated storage solutions, and smart home features provide exceptional comfort and convenience
- Oversized heated garage, extensive crawl-space storage, and thoughtfully designed utility spaces ensure everyday functionality without compromising the home's clean architectural aesthetic
- Large 0.57-acre lot located on a quiet cul-de-sac, offering privacy, security, and one of Kelowna's most captivating lake-view settings

Inclusions

- KitchenAid refrigerator
- KitchenAid dishwasher
- KitchenAid wine cooler
- KitchenAid gas range
- Stainless steel range hood
- KitchenAid microwave
- KitchenAid beverage cooler
- Maytag front-load washer
- Maytag front-load dryer

Mechanical

- Trane furnace
- Trane A/C
- Navien hot water system
- 200-amp service panel
- Ecobee thermostat
- Irritrol irrigation system
- Novo water softener

MAIN LEVEL

Entry/Foyer

- Dramatic entry with 12-foot ceilings create an immediate sense of elegance and scale upon arrival
- Stunning white oak hardwood flooring by Koeda Hardwood Floors extends throughout the main living areas, drawing your eye toward the lake views beyond
- Oversized entry closet provides practical everyday storage

Living Room

- Soaring 11-foot tray ceilings with integrated lighting create a warm, refined gathering space framed by panoramic lake, city, bridge, and mountain views
- Striking Dekton-clad linear gas fireplace serves as the focal point of the room, complemented by a custom illuminated wine display with glass enclosure
- Expansive sliding glass doors open effortlessly to the covered terrace, pool deck, and panoramic lake views, creating a beautiful connection between indoor and outdoor living

Kitchen

- Award-calibre kitchen showcases clean architectural lines, premium finishes, and exceptional functionality
- Oversized 4' x 9' island features honed Dekton surface, integrated storage, seating for four, and statement pendant lighting above
- Large west-facing picture window positioned above the deep undermount sink captures breathtaking views of Okanagan Lake, downtown Kelowna, the bridge, and surrounding mountains
- Two-tone Norelco cabinetry combines soft grey and white wood-grain finishes with brushed stainless hardware and soft-close components
- Full-height tile backsplash, under-cabinet lighting, and thoughtfully integrated storage solutions enhance the design and functionality
- Premium KitchenAid appliance package includes a built-in refrigerator, wine cooler, dishwasher, and professional 6-burner gas range with wall-mounted pot filler
- Open-concept design flows effortlessly into the dining and living areas, creating a great entertaining environment

Butler's Pantry

- Ceiling-height cabinetry provides abundant storage while maintaining the kitchen's clean, contemporary appeal
- White quartz countertops, herringbone tile backsplash, and undermount prep sink create a functional and beautifully finished workspace
- Dedicated coffee and beverage station features a KitchenAid beverage cooler and built-in KitchenAid microwave
- Pocket door allows the space to be discreetly concealed when hosting guests

Dining Room

- Large sliding patio doors provide direct access to the covered terrace and poolside lounging areas
- Custom built-in server with white quartz countertop and wood-grain cabinetry offers additional storage and serving space
- Contemporary linear chandelier enhances the space while preserving unobstructed sightlines to the surrounding views
- Open-concept design creates effortless flow between the kitchen, living and dining areas to the outdoor living spaces

Laundry Room

- Spacious and thoughtfully designed utility space featuring white oak hardwood flooring and extensive cabinetry, Maytag front load washer & dryer
- Upper and lower storage cabinets are complemented by white quartz countertops and a fully tiled backsplash, undermount sink with polished chrome fixture

Mudroom

- Transition space connecting the garage and main living areas
- Custom built-in bench with storage below
- Large closet with custom built-ins
- Sliding barn-style door allows the space to be closed off when desired

Three Bedrooms

- The primary bedroom features white oak hardwood flooring, a floor-to-ceiling fluted feature wall, large windows capture the unobstructed views, hidden motorized blinds, a custom built-in bookshelf, designer pendant bedside lighting, a spacious walk-in closet with custom built-ins, soft-close cabinetry, and a luxurious 5-piece ensuite
- The second bedroom features white oak hardwood flooring, custom blind covering a large front-facing window, a comfort ceiling fan, a spacious double-door closet with custom built-ins and soft-close drawer storage
- The third bedroom features white oak hardwood flooring, custom drapery, a large front-facing window, a ceiling fan, a double-door closet with custom built-ins and soft-close drawer storage

Three Bathrooms

- 5-piece primary ensuite features heated glazed porcelain tile flooring in a vintage-inspired geometric pattern, two floating vanities with quartz countertops & undermount sinks, wood veneer flat front cabinetry, under-cabinet lighting, a freestanding soaker tub, a fully tiled glass-enclosed shower with rain and handheld showerheads complete with seamless tile transitions throughout
- 3-piece bathroom features heated tile flooring, a large vanity with white cabinetry, polished chrome hardware, quartz countertop with undermount sink, a fully tiled walk-in shower, and direct access to the pool deck
- 2-piece powder room features hardwood floors, a floating vanity, wood flat-front cabinetry, soft-close hardware, a white quartz countertop with a vessel sink and under-cabinet sensor lighting

Storage/Utility Space

- Expansive crawl space spans the length of the home, providing exceptional storage for seasonal items, recreational equipment, and household essentials

LOCATION





*Beautiful Home in Prime
Location*

Embodying the Best of the Okanagan
Luxury Lifestyle

Perched above the city in one of Kelowna's most coveted areas, this architectural retreat captures breathtaking lake, valley, and city views through walls of glass and timeless contemporary design. A rare blend of privacy, sophistication, and effortless indoor-outdoor living.

— Jane Hoffman

Follow Jane Hoffman Realty

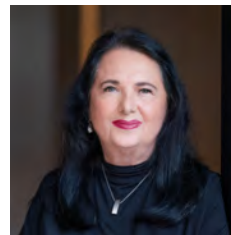


JANE HOFFMAN
REALTY

250-866-0088
inquiry@janehoffman.com
janehoffman.com

100 – 730 Vaughan Ave
Kelowna, BC
V1Y 7E4

PRESENTED BY



JANE HOFFMAN
Personal Real Estate Corporation

250-862-7800
jane@janehoffman.com



JANE HOFFMAN
REALTY

The Benchmark for *Excellence*



JANE HOFFMAN REALTY

100 - 730 Vaughan Ave • Kelowna, BC • V1Y 7E4
250-866-0088 • www.janehoffman.com