



2111 LILLOOET CRESCENT, KELOWNA

Presented by
Dean Simonelli
Real Estate Professional



JANE HOFFMAN
REALTY



2111 LILLOOET CRESCENT, KELOWNA

Popular Dilworth Mountain custom built one owner home offers flexible space for multi-generational living with an inviting main residence and a bright lower-level in-law suite. A convenient location close to downtown and everything Kelowna has to offer! Lillooet Park at your back doorstep plus trails and green space in every other direction.

The main floor features generous windows, soaring ceilings, and an easy flow between main floor driveway into the kitchen, family room, dining, and living areas. The kitchen features a curved central island, induction cooktop, wall oven, wet bar, and a pass-through to the dining room, while the adjacent family room walks straight out to the private backyard. An airy living room with gas fireplace opens out onto the front lake view.

Upper floor features a spacious primary with lake view deck, a large five piece ensuite bath complete with soaker tub and tiled walk-in shower. Dual primary walk-in closets. Three additional bedrooms, two have ensuites plus a flex space ideal for home office or family study. Multiple skylights for all day natural lighting.

The lower level offers in-slab heated flooring. An oversized double garage, tandem on one side plus an attached dedicated storage or office space. A fully self-contained in-law suite with kitchen, living area, and one bedroom with a four-piece ensuite with separate entry comprise most of the lower level daylight living. Plus a large additional room for future development or extra storage!

This unique, one of a kind property with its combination of convenience and flexibility offers a multitude of lifestyle opportunities for either a younger or mature family's needs!

DETAILS

Address	2111 Lillooet Crescent, Kelowna, BC, V1V 1Y2	Bedrooms	6
City	Kelowna	Bathrooms	6
		Finished Area	4,957 Sq. Ft.

SPECIFICATIONS

Lot Size	0.19 Acres	Zoning	RU1
Water	Municipal	Legal Description	LOT 42 SECTION 28 TOWNSHIP 26 OSOYOOS DIVISION YALE DISTRICT PLAN KAP50737
Sewer	Connected	Ownership	Freehold, Fee Simple
Features	Central Business District, Easy Access, Landscaped, Near Park, Paved, Private, Near Public Transit, Sprinklers in Ground		
View	Lake, Mountains, City		

BUILDING FEATURES

Finished Area	4,957 Sq. Ft.	Fireplace	1 Fireplace (Gas)
Year Built	2001	Parking	2 Garage Spaces Attached, Garage
Storeys	3	Construction	Stucco, Wood Frame
A/C	Central Air	Foundation	Concrete Perimeter
Heating	Forced Air, Radiant Floor	Exterior Features	Balcony, Private Yard, Sprinkler System
Interior Features	Kitchen Island, Double Vanity, High Ceilings, Central Vacuum, Wet Bar	Basement	Full, Finished, Walkout, Separate Entry

ROOM SIZES

Main Level

Living Room: 21'6" x 15'6"
Laundry: 11'7" x 9'4"
Kitchen: 21'4" x 15'5"
Foyer: 6'10" x 8'11"
Family Room: 21'4" x 19'6"
Dining Room: 19'6" x 15'5"
Bedroom: 11'3" x 15'3"
3-Piece Bathroom: 11'6" x 5'6"
2-Piece Bathroom: 7'2" x 5'3"

Lower Level

Storage Room: 11'0" x 14'7"
Kitchen: 9'0" x 17'4"
Dining Room: 10'7" x 13'3"
Bedroom: 11'1" x 15'6"
4-Piece Bathroom: 5'6" x 8'6"

Second Level

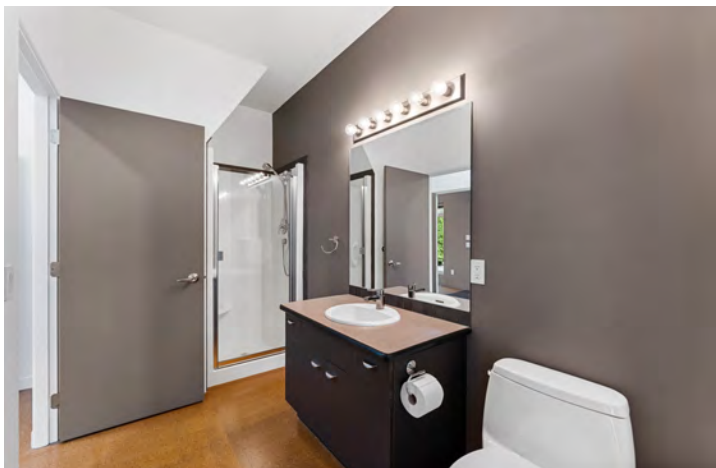
Primary Bedroom: 19'4" x 24'5"
Bedroom: 11'4" x 13'4"
Bedroom: 13'7" x 13'4"
Bedroom: 13'7" x 13'7"
5-Piece Ensuite Bath: 11'11" x 10'3"
4-Piece Bathroom: 7'8" x 8'5"
2-Piece Ensuite Bath: 5'0" x 8'4"



















2111 Lillooet Ct, Kelowna, BC

Main Floor Exterior Area 2120.71 sq ft
Interior Area 2013.24 sq ft



2111 Lillooet Ct, Kelowna, BC

Upper Level Exterior Area 1553.16 sq ft
Interior Area 1451.78 sq ft
Excluded Area 177.78 sq ft



2111 Lillooet Ct, Kelowna, BC

Lower Level (Below Grade) Exterior Area 1282.76 sq ft
Interior Area 1197.40 sq ft
Excluded Area 1007.03 sq ft



PREPARED: 2026/04/02



While regions are excluded from total floor area in IGUIDE floor plans. All room dimensions and floor areas must be considered approximate and are subject to independent verification.



EXCEPTIONAL FEATURES

- A beautifully designed residence offering approximately 4,957 square feet of living space across three levels, set on a 0.19-acre lot and thoughtfully laid out to accommodate both everyday living and extended family needs
- Six bedrooms and six bathrooms, including multiple ensuites, designed with comfort, flexibility, and a consistent finishing palette throughout
- The main level features expansive main living spaces with 9' ceilings, creating a bright and open environment
- The upper level offers a private retreat, highlighted by a primary suite with vaulted ceiling, its own deck and elevated views of the city, lake, and surrounding mountains
- Finishing details include cork flooring throughout the main living areas, tile surfaces, and abundant built-in cabinetry, contributing to both warmth and functionality
- Large west-facing windows throughout the home capture views of the city, Okanagan Lake, and surrounding mountains, while maximizing natural light
- Enhanced comfort and efficiency with updates including a new hot water boiler (2025), air conditioning system (2024), and updated furnace
- The home offers excellent flexibility with a lower-level in-law suite, featuring a separate entrance, high ceilings, and the ability to function as a fully self-contained living space
- Outdoor living is convenient with multiple access points, including a curved upper deck with glass railings and Duradek surface, designed to capture panoramic views
- The backyard is fully fenced and landscaped, surrounded by natural vegetation, mature cedars, and rock retaining walls for added privacy and a connection to nature
- A covered patio with pergola and gas BBQ hookup provides a comfortable space for outdoor lounging and entertaining
- The garage offers a deep double-car configuration with additional storage space, built-in workbench, and direct access to the home
- The front approach is finished with a low-maintenance landscape design, concrete driveway with parking for two vehicles and room to accommodate RV parking
- Ideally located in an established neighbourhood with convenient access to schools, shopping, and recreation
- A well-maintained home offering a rare combination of space, flexibility, and views, ideal for multi-generational living

Inclusions

- Frigidaire oven
- Kenmore induction cooktop
- Venmar hood fan
- KitchenAid refrigerator
- Kenmore dishwasher
- GE beverage fridge
- Amana washing machine
- Amana dryer
- Kenmore washer
- Kenmore dryer
- Kenmore electric stove (suite)
- Kenmore refrigerator(suite)
- Whirlpool over the range microwave(suite)
- Kenmore dishwasher(suite)

Mechanical

- York furnace
- York A/C
- 2 x 200-amp service panel
- Navien on demand hot water
- Honeywell thermostat
- Telus security
- Vacumaid central vacuum
- Fantech HRV

MAIN LEVEL

Kitchen

- Durable cork flooring
- Large central island with curved countertop, raised bar, and seating for three, double stainless-steel sink
- Abundant upper and lower cabinetry with a tiled backsplash
- Pass-through window to the dining area
- Built-in wall oven and pantry with integrated storage
- Appliance package including Frigidaire wall oven, Kenmore induction cooktop, Venmar hood fan, KitchenAid refrigerator, and Kenmore dishwasher
- Wet bar area with built-in desk and tile backsplash
- Open to the adjacent family room with large windows and views of the backyard

Family Room

- Cork flooring, large west-facing windows overlooking the backyard
- Open-concept design convenient to the kitchen
- Direct access to the outdoor covered patio and back yard

Dining

- Cork flooring, tray ceiling with recessed lighting
- Expansive west-facing windows framing views of the city, lake, and surrounding mountains
- Direct access to the outdoor deck
- Open-concept design flowing seamlessly into the main living area

Living

- Cork flooring continues through out the space
- 14' vaulted ceilings with a dramatic peaked design
- Gas fireplace anchoring the space
- Expansive west-facing windows capturing city, lake, and mountain views
- French doors leading to the foyer
- Direct access to the deck, enhancing indoor-outdoor living

Laundry

- Cork flooring, upper and lower cabinetry with large utility sink
- Linen closet for additional storage
- Amana front-load washer and dryer

Bedroom

- The bedroom features carpet flooring, sliding door access to the outdoor patio, a double-door closet, and a 3-piece ensuite

Two Bathrooms

- 3-piece ensuite features cork flooring, a vanity with drop-in sink, a wall mounted mirror, and a walk-in shower
- 2-piece bathroom features cork flooring, a floating vanity with tile countertop and stainless-steel vessel sink, window with privacy glass

UPPER LEVEL

Four Bedrooms

- Primary bedroom features carpet flooring, 13' vaulted ceilings, large west-facing windows, sliding door access to a private deck, two spacious walk-in closets, and a 5-piece ensuite
- The second bedroom features carpet flooring, a double-door closet with built-ins, and a bonus area with west-facing skylights
- The third bedroom features carpet flooring, a large west-facing window, and a double-door closet with built-ins
- The fourth bedroom features carpet flooring, a large west-facing window, a double closet with built-ins, and a 3-piece ensuite

Three Full Bathrooms

- 5-piece ensuite features cork flooring, a vanity with two drop-in sinks, a soaker tub with tile surround, and a fully tiled glass enclosed walk-in shower
- 4-piece ensuite features, cork flooring, a vanity with a drop-in sink, a large wall-mounted mirror and a walk-in shower
- 4-piece bathroom feature cork flooring, a skylight providing natural light, a vanity with tile backsplash and large wall-mounted mirror, and a tub/shower combination with tile surround

LOWER LEVEL

Living

- Heated cork flooring, open-concept layout connected to the kitchen
- Large west-facing windows providing natural light

Kitchen

- Heated cork flooring, flat-panel cabinetry in a dark tone
- Quartz countertop with under-mount double stainless steel sink
- Under-cabinet lighting, large west-facing window

Laundry

- Heated cork flooring, built-in upper cabinetry with folding countertop
- Front-load washer and dryer
- Additional space for storage or utility use

Bedroom

- The bedroom features heated cork flooring, windows providing natural light, a large sliding-door closet with built-ins, and a 4-piece ensuite

Full Bathroom

- 4-piece ensuite features cork flooring, a vanity with quartz countertop and under-mount sink, and a tub/shower combination with full tile surround

Bonus Room

- Unfinished space with concrete flooring
- Window providing natural light
- Ideal for storage or future development
- Potential for additional bedroom, family room, or flexible living space

LOCATION



SCHOOLS

4 public & 3 Catholic schools serve this home. Of these, 3 have catchments. There are 5 private schools nearby.



PARKS & REC

11 playgrounds, 2 dog parks and 66 other facilities are within a 20 min walk of this home.



TRANSIT

1 street transit stops within a 10 min walk. Street transit stop less than a 1 min walk away.



*Multi-Generational Living -
Custom Built One Owner
Home!*

Featuring park, city & mountain views!

This spacious residence blends elevated west-facing views with exceptional versatility, offering nearly 5,000 sq. ft. of thoughtfully designed living space. From the vaulted main living areas to the private upper-level retreat and self-contained lower suite, the home is perfectly suited for both everyday comfort and extended family living. Surrounded by mature landscaping and set within an established neighbourhood close to schools, recreation, & amenities, it delivers a rare balance of space, privacy, and lifestyle. Backs onto Dilworth Mtn. Park. Available for immediate possession.

— Dean Simonelli

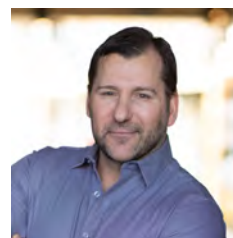
Follow Jane Hoffman Realty



250-866-0088
inquiry@janehoffman.com
janehoffman.com

100 – 730 Vaughan Ave
Kelowna, BC
V1Y 7E4

PRESENTED BY



DEAN SIMONELLI

Real Estate Professional

250-863-6300
dean@janehoffman.com



JANE HOFFMAN
REALTY

The Benchmark for *Excellence*



JANE HOFFMAN REALTY

100 - 730 Vaughan Ave • Kelowna, BC • V1Y 7E4
250-866-0088 • www.janehoffman.com