



6047 TURNER AVENUE, PEACHLAND

Presented by

Sherry Truman

Personal Real Estate Corporation



JANE HOFFMAN

REALTY



6047 TURNER AVENUE, PEACHLAND

Beautiful lake and mountain views from this well-maintained home offering flexible living in a convenient Peachland location. Just minutes from Peachland's waterfront, amenities, and transit, the property blends everyday comfort with the natural beauty of the Okanagan. The main level features a bright open-concept design with hardwood floors and large windows that capture views of the surrounding mountains and Okanagan Lake.

The kitchen is designed for both function and gathering, with white shaker cabinetry, stainless steel appliances, a central island with wood countertop, and a window above the sink overlooking the backyard and lake. The dining area flows seamlessly to the covered upper deck with a gas BBQ hookup and stairs leading to the backyard perfect for enjoying Okanagan outdoor living.

The main floor offers two bedrooms and two bathrooms, including a spacious primary retreat with a private three-piece ensuite. A large third bedroom located on the lower level completes the main home's living space.

Downstairs, a two-bedroom, one-bathroom in-law suite provides excellent flexibility for extended family or guests. The suite includes access to a covered patio and fenced backyard.

Additional highlights include 200-amp electrical service, a natural gas furnace, central A/C, a double garage, and parking for up to four vehicles.

With scenic lake views and a location just minutes to Peachland's waterfront, this home offers exceptional value in the heart of the Okanagan.

DETAILS

Address	6047 Turner Avenue, Peachland, BC, V0H 1X4	Bedrooms	5
City	Peachland	Bathrooms	3
		Finished Area	2,382 Sq. Ft.

SPECIFICATIONS

Lot Size	0.27 Acres	Zoning	R1
Water	Irrigation District	Legal Description	LOT 2, PLAN KAP26525, DISTRICT LOT 1183, OSOYOOS DIV OF YALE LAND DISTRICT
Sewer	Septic Tank	Ownership	Freehold, Fee Simple
Features	Near Park, Paved, Views, Near Public Transit		
View	Lake, Mountains, Water		

BUILDING FEATURES

Finished Area	2,382 Sq. Ft.	Parking	2 Garage Spaces Attached, Garage
Year Built	1986	Construction	Stucco, Wood Frame, Fiber Cement
Storeys	2	Foundation	Concrete Perimeter
A/C	Central Air	Exterior Features	Balcony
Heating	Forced Air		
Interior Features	Kitchen Island		

ROOM SIZES

Main Level

Dining Room: 10'3" x 10'10"
Kitchen: 13'11" x 11'4"
Bedroom: 14'0" x 12'4"
Living Room: 18'1" x 12'3"
3-Piece Ensuite Bath: 8'5" x 5'8"
Laundry: 12'5" x 5'3"
Primary Bedroom: 10'6" x 14'5"
Bathroom: 8'5" x 4'11"

Lower Level

3-Piece Bathroom: 5'11" x 6'4"
Bedroom: 16'1" x 15'4"
Living Room: 13'7" x 12'0"
Kitchen: 12'0" x 12'0"
Bedroom: 22'2" x 11'9"
Utility Room: 3'5" x 7'2"
Bedroom: 10'9" x 11'2"















6047 Turner Ave, Peachland, BC

Main Floor Exterior Area 1253.46 sq ft
Interior Area 1168.04 sq ft
Excluded Area 513.13 sq ft



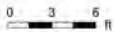
PREPARED: 2026/03/03



While regions are excluded from total floor area in IGUIDE floor plans. All room dimensions and floor areas must be considered approximate and are subject to independent verification.

6047 Turner Ave, Peachland, BC

Lower Level (Below Grade) Exterior Area 1128.04 sq ft
Interior Area 1044.16 sq ft
Excluded Area 24.71 sq ft



PREPARED: 2026/03/03



While regions are excluded from total floor area in IGUIDE floor plans. All room dimensions and floor areas must be considered approximate and are subject to independent verification.

EXCEPTIONAL FEATURES

- A well-maintained residence offering approximately 2,382 square feet of living space across two levels, set on a large 0.27-acre lot
- The main home features three bedrooms and two bathrooms, with an additional two-bedroom lower-level suite, ideal for extended family or flexible living arrangements
- The main level is designed with a bright, open-concept layout connecting the kitchen, dining, and living areas
- Finishing details include hardwood and vinyl flooring, white shaker-style cabinetry, and granite countertops, creating a clean and functional interior
- Large windows throughout the home capture views of Lake Okanagan, surrounding mountains, and the backyard landscape, while providing lots of natural light
- The upper deck, accessed directly from the kitchen and dining area, features durable Duradek surfacing, partial coverage, and a gas BBQ hookup, offering a comfortable outdoor space for dining and relaxation
- Stairs from the deck provide direct access to the fully fenced backyard, offering ample space for outdoor enjoyment
- The property includes a double garage with natural light, along with a concrete driveway providing parking for multiple vehicles
- Additional features include underground irrigation and proximity to transit, enhancing everyday convenience
- Ideally located just 10 minutes to Peachland and within easy reach amenities, beaches, and wineries, offering a balanced Okanagan lifestyle
- A versatile and move-in ready home that combines views, outdoor space, and flexible living options in a desirable residential setting

Inclusions

- GE profile refrigerator
- Frigidaire gas range
- Dishwasher
- Ancona hood fan
- LG washer
- LG dryer
- LG stacking front-loads washer/dryer

Mechanical

- Tempstar furnace
- Amana A/C
- 200-amp service panel
- John Wood hot water tank
- Honeywell thermostat

MAIN LEVEL

Kitchen/Dining

- Vinyl flooring, white shaker-style cabinetry for a clean, timeless look
- Functional central island with wood countertop, open-concept with living & dining areas
- Window above the sink showcasing views of the backyard, Lake Okanagan, and surrounding mountains
- Bright dining area with hardwood floor and large window framing scenic views, access to the upper deck

Living

- Hardwood flooring, spacious main living area with large picture window overlooking the front yard
- Open connection to kitchen and dining areas, creating a comfortable and functional flow

Laundry

- Vinyl flooring, conveniently located off the garage, LG front-load washer and dryer

Two Bedrooms

- Primary bedroom features hardwood flooring, a comfortable layout with a large closet, a window capturing views of the surrounding mountains, and a 3-piece ensuite
- The second bedroom features, hardwood flooring, a large window, and a double-door closet

Two Full Bathrooms

- 3-piece ensuite features tile flooring, a vanity with engineered stone countertop, a walk-in shower, and a window with privacy glass for natural light
- 4-piece bathroom features, tile flooring, a vanity with moulded sink countertop, a wall-mounted mirror with integrated storage, and a tub/shower combination with tile surround

LOWER LEVEL

Bedroom

- The bedroom features carpet flooring, a spacious layout, a window providing natural light, and a sliding-door closet

Lower Level Suite

- A self-contained two-bedroom, one-bathroom lower-level suite, offering flexibility for extended family or multi-generational living
- Designed with an efficient, open-concept layout connecting the kitchen and living areas
- The kitchen features laminate flooring, white cabinetry, tile backsplash, and a peninsula island with seating for three, along with a full appliance package
- The living area includes sliding door access to a covered patio, creating a seamless connection to outdoor space
- Both bedrooms offer comfortable layouts with windows and double-door closets
- The bathroom is finished with a fully tiled walk-in shower, vanity, and privacy window for natural light
- In-suite laundry with LG stacking front-load washer and dryer adds convenience and independence
- A covered concrete patio provides direct access to the backyard
- A well-maintained and versatile suite that enhances the home's overall functionality and long-term value

LOCATION



SCHOOLS

6 public & 1 Catholic schools serve this home. Of these, 3 have catchments. There are 3 private schools nearby.



PARKS & REC

1 playground, 3 beaches and 8 other facilities are found in major parks near this home.



TRANSIT

1 street transit stops within a 10 min walk. Street transit stop less than a 5 min walk away.



Nestled in Peachland
In A Convenient Location

Just minutes to the waterfront, amenities and transit. This home captures lovely lake and mountain views adding to an easygoing Okanagan lifestyle.

— Sherry Truman

Follow Jane Hoffman Realty



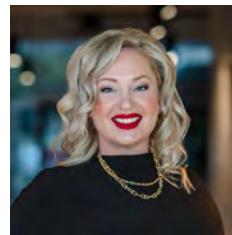
PRESENTED BY

SHERRY TRUMAN

Personal Real Estate Corporation

250-215-9006

sherry@janehoffman.com



CO-LISTED BY

TIFFANI AINSWORTH

Real Estate Professional

250-808-5499

tiffani@janehoffman.com



JANE HOFFMAN
REALTY

250-866-0088

inquiry@janehoffman.com

janehoffman.com

100 – 730 Vaughan Ave

Kelowna, BC

V1Y 7E4



JANE HOFFMAN
REALTY

The Benchmark for *Excellence*



JANE HOFFMAN REALTY

100 - 730 Vaughan Ave • Kelowna, BC • V1Y 7E4
250-866-0088 • www.janehoffman.com