



3290 LANDRY CRESCENT, SUMMERLAND

Presented by

Gregory Dusik

Personal Real Estate Corporation



JANE HOFFMAN

REALTY



3290 LANDRY CRESCENT, SUMMERLAND

Waterfront living at Lakehouse Summerland, an exclusive lakeside community perched along the shores of Okanagan Lake. This beautifully designed 3 bedroom, 3 bath residence blends contemporary architecture with refined finishes inspired by the natural tones of the Okanagan landscape. The main level is designed for effortless living and entertaining, where soaring ceilings and large windows fill the open-concept living and dining areas with natural light while framing lake and mountain views.

A modern gas fireplace anchors the living space, while the chef-inspired kitchen features sleek flat-panel cabinetry, engineered stone countertops, a contrasting wood-tone island and premium Fisher & Paykel appliances. Sliding doors extend the living space to a patio with a built-in BBQ, perfect for outdoor dining and relaxed summer evenings.

All bedrooms are thoughtfully located on the upper level, creating a private retreat away from the main living spaces. The primary suite offers lake views, custom closets and a spa-inspired ensuite, while two additional bedrooms and a full bath provide comfortable accommodation for family or guests.

Residents enjoy resort-style amenities including a pool, hot tub, beach access, fitness centre and lounge deck, just minutes from wineries, golf and Penticton.

DETAILS

Address	3290 Landry Crescent, Summerland, BC, V0H 1Z9	Bedrooms	3
City	Summerland	Bathrooms	3
		Finished Area	1,583 Sq. Ft.

SPECIFICATIONS

Water	Municipal	Zoning	RMD
Sewer	Connected	Legal Description	STRATA LOT 3, PLAN EPS9362, DISTRICT LOT 477, OSOYOOS DIV OF YALE LAND DISTRICT, TOGETHER WITH AN INTEREST IN THE COMMON PROPERTY IN PROPORTION TO THE UNIT ENTITLEMENT OF THE STRATA LOT AS SHOWN ON FORM V
Features	Easy Access, Landscaped, Near Park, Paved, Views, Waterfront, Near Golf Course, Level	Ownership	Freehold, Strata
View	Lake, Mountains, Valley		
Waterfront	Lake, Waterfront		

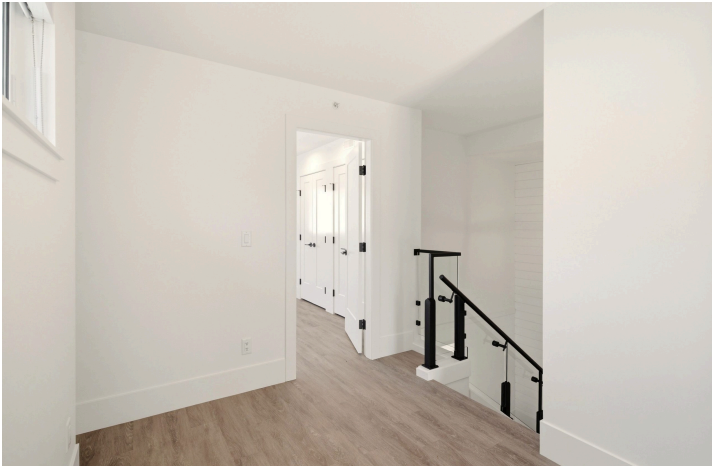
BUILDING FEATURES

Finished Area	1,583 Sq. Ft.	Fireplace	1 Fireplace (Gas)
Year Built	2024	Parking	1 Garage Space Attached, Garage, On Site Strata Parking Type:Part of Strata/Assoc Lot
Storeys	2	Construction	Wood Frame, Fiber Cement
Pool	Pool, In Ground, Outdoor	Foundation	Concrete Perimeter
A/C	Wall Units, Heat Pump	Exterior Features	Balcony
Heating	Heat Pump		
Interior Features	Kitchen Island, Double Vanity, High Ceilings, Vaulted Ceilings		
Monthly Fees	\$464.72		

ROOM SIZES

Main Level	Second Level
Living Room: 12'10" x 13'10"	Primary Bedroom: 11'10" x 12'11"
Laundry: 8'5" x 9'3"	Bedroom: 9'5" x 14'8"
Kitchen: 10'1" x 15'1"	Bedroom: 9'1" x 12'3"
Dining Room: 8'8" x 11'2"	4-Piece Ensuite Bath: 6'5" x 11'0"
2-Piece Bathroom: 4'5" x 6'5"	4-Piece Bathroom: 9'5" x 5'0"

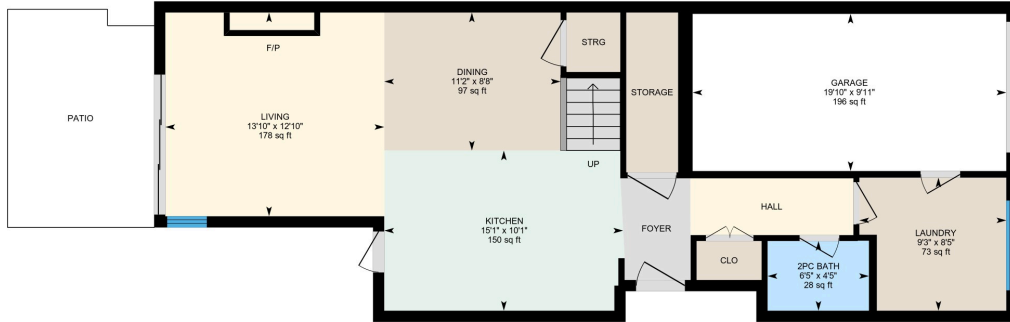






3290 Landry Crescent, Summerland, BC

Main/first Floor Exterior Area 782.15 sq ft
Interior Area 681.40 sq ft
Excluded Area 217.51 sq ft



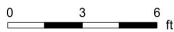
PREPARED: 2026/03/03



While regions are excluded from total floor area in iGUIDE floor plans. All room dimensions and floor areas must be considered approximate and are subject to independent verification.

3290 Landry Crescent, Summerland, BC

Second Floor Exterior Area 800.91 sq ft
Interior Area 716.77 sq ft



PREPARED: 2026/03/03



While regions are excluded from total floor area in iGUIDE floor plans. All room dimensions and floor areas must be considered approximate and are subject to independent verification.

EXCEPTIONAL FEATURES

- A thoughtfully designed residence offering approximately 1,583 square feet of living space across two levels, blending modern design with everyday functionality
- Three bedrooms and three bathrooms, finished with a cohesive and contemporary finishing palette throughout
- The main level features a bright, open-concept layout, ideal for both entertaining and daily living
- Finishing details include driftwood grey luxury vinyl plank flooring, engineered stone surfaces, and modern European-style cabinetry, creating a clean and refined aesthetic
- Large windows throughout the home capture views of Lake Okanagan, surrounding mountains, and nearby orchard landscapes, while maximizing natural light
- Enhanced comfort with wall-mounted remote-control A/C units, high ceilings, stair lighting, and glass and metal railings
- A main-level patio positioned off the kitchen and dining area features a built-in gourmet outdoor kitchen with Napoleon gas barbecue, designed for seamless indoor-outdoor living
- Outdoor spaces are finished with concrete paver stone surfaces, offering low-maintenance functionality and a modern outdoor setting
- The home includes a single-car garage with additional driveway parking
- Located within a beachfront townhouse community in Summerland, residents enjoy access to a clubhouse with indoor pool, hot tub, and BBQ area
- Ideally positioned just minutes from world-class wineries, golf courses, lake access, schools, and downtown Penticton, offering a balanced Okanagan lifestyle
- A move-in ready home that combines modern design, low-maintenance living, and proximity to the water, all within a cohesive and well-planned community

Inclusions

- Fisher&Paykel gas range
- Fisher&Paykel refrigerator/freezer
- Fisher&Paykel dishwashers drawers x 2
- Fisher&Paykel hood fan
- Fisher&Paykel steam oven
- LG washer
- LG dryer
- Marvel wine cooler

Mechanical

- Carrier furnace
- Carrier ductless A/C
- 200-amp service panel
- Navien on demand
- Aube and Nuheat thermostats
- Fantech HERO fresh air ventilation

MAIN LEVEL

Kitchen/Dining

- Luxury vinyl plank flooring, central island with rich wood countertop, double Blanco sink, and seating for two
- European-style cabinetry in soft grey tones with matte black hardware
- Quartz countertops with tile and wood plank backsplash at the main cooking area
- Built-in pantry storage with integrated drawer organization
- Fisher & Paykel appliance package including five-burner gas range, panelled refrigerator/freezer, wall-mounted steam oven, and double-drawer dishwasher
- Black stainless steel wall-mounted hood fan
- Direct access to the outdoor patio
- Open-concept dining area seamlessly connected to the living room
- Shiplap feature wall adding a subtle coastal-inspired design element
- Glass chandelier complemented by recessed lighting

Living

- Luxury vinyl plank flooring, central gas fireplace with tile surround and wood mantel
- Expansive floor-to-ceiling windows
- Upper windows with motorized blinds, ceiling fan with light
- Sliding doors opening to the outdoor kitchen and patio for seamless indoor-outdoor living

Laundry

- Luxury vinyl plank flooring, built-in cabinetry with engineered stone countertop
- Under-mount stainless steel sink with comfort height workspace
- Large window providing natural light
- LG front-load washer and dryer
- Built-in Marvel beverage fridge

Bathroom

- Two-piece powder room features, luxury vinyl plank flooring, a shiplap feature, a vanity with modern panel flat front cabinetry and soft-close hardware, an engineered stone countertop with under-mount sink, and Riobel matte black fixtures

UPPER LEVEL

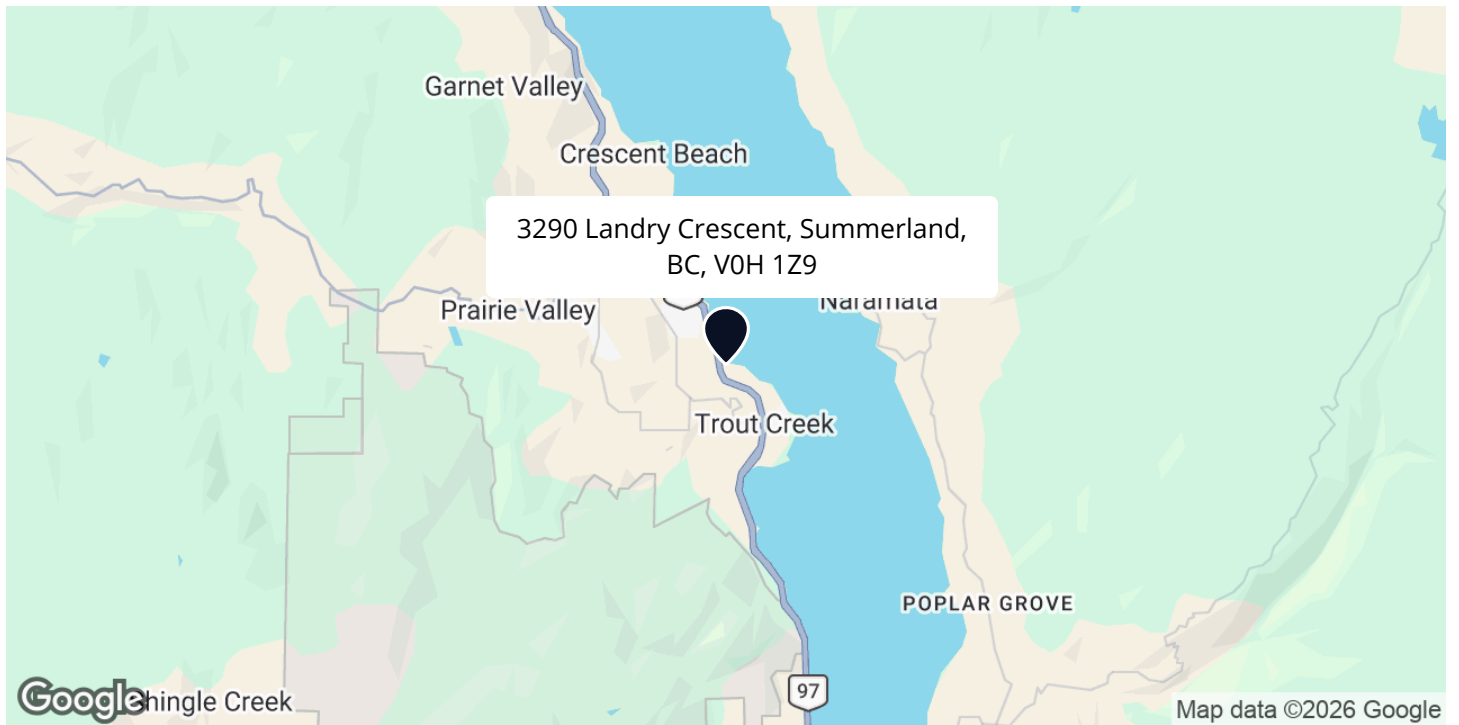
Three Bedrooms

- Primary bedroom features luxury vinyl plank flooring, windows capturing views of the lake, a spacious closet with built-ins, and a 4-piece ensuite
- The second bedroom features luxury vinyl plank flooring, an oversized window overlooking the orchard and surrounding mountains and a double-door closet with built-ins
- The third bedroom features luxury vinyl plank flooring, a window with views of the orchard, and a double-door closet with built-ins

Two Full Bathrooms

- 4-piece ensuite features heated tile flooring, a vanity with engineered stone countertop and two under-mount sinks, wall-mounted faucets, under-cabinet lighting, and a fully tiled walk-in shower with rain and wand showerheads
- 4-piece bathroom features heated tile flooring, a vanity with engineered stone countertop and under-mount sink, flat-front cabinetry and soft-close hardware, and a tub/shower combination with tile surround

LOCATION



SCHOOLS

8 public & 1 Catholic schools serve this home. There are 3 private schools nearby.



PARKS & REC

1 sports field, 3 beaches and 9 other facilities are found in major parks near this home.



*Lakehouse is the Perfect
Opportunityy
To Live on the Lake*

You can take full advantage of a lakeshore lifestyle at an affordable price! All of the homes provide the ability to get up in the morning, carry your paddle board to the beach and enjoy a peaceful morning paddle before even starting your day!

— Gregory Dusik

Follow Jane Hoffman Realty



PRESENTED BY

GREGORY DUSIK

Personal Real Estate Corporation

250-869-2806

greg@janehoffman.com



CO-LISTED BY

ISAAC TIEN

Real Estate Professional

250-826-4579

isaac@janehoffman.com



JANE HOFFMAN
REALTY

250-866-0088
inquiry@janehoffman.com
janehoffman.com

100 – 730 Vaughan Ave
Kelowna, BC
V1Y 7E4



JANE HOFFMAN
REALTY

The Benchmark for *Excellence*



JANE HOFFMAN REALTY

100 - 730 Vaughan Ave • Kelowna, BC • V1Y 7E4
250-866-0088 • www.janehoffman.com