

3170 LANDRY CRESCENT, SUMMERLAND

Presented by

Gregory Dusik

Personal Real Estate Corporation



JANE HOFFMAN
REALTY



3170 LANDRY CRESCENT, SUMMERLAND

Waterfront living at Lakehouse Summerland, an exclusive lakeside community perched along the shores of Okanagan Lake. This beautifully designed 3 bedroom, 3 bath residence offers contemporary living inspired by the natural tones and textures of the Okanagan landscape. Inside, luxury vinyl flooring and soaring ceilings create a bright, airy atmosphere, while expansive windows invite natural light throughout the open-concept main level.

The chef-inspired kitchen pairs sleek modern cabinetry with engineered stone countertops, a distinctive butcher block island and premium Fisher & Paykel appliances, including a paneled refrigerator, dual-fuel range, speed microwave oven and double drawer dishwasher. The dining area flows seamlessly to a spacious tiled patio with a built-in outdoor kitchen, creating an effortless extension of the interior living space, perfect for lakeside entertaining.

Upstairs, the primary retreat offers lake views, custom closets and a spa-like ensuite with double vanity and frameless glass shower. Two additional bedrooms, a full bath with designer tile finishes, and a loft-style office or reading nook complete the upper level.

Residents enjoy resort-style amenities including beach access, a pool, hot tub, fitness centre, lounge deck and beautifully landscaped gathering spaces, all moments from wineries, golf and Penticton.

Photos in this listing are of a similar unit, updated photos to come.

DETAILS

Address	3170 Landry Crescent, Summerland, BC, V0H 1Z9	Bedrooms	3
City	Summerland	Bathrooms	3
		Finished Area	1,792 Sq. Ft.

SPECIFICATIONS

Water	Municipal	Zoning	RMD
Sewer	Connected	Legal Description	STRATA LOT 18, PLAN EPS9362, DISTRICT LOT 477, OSOYOOS DIV OF YALE LAND DISTRICT, TOGETHER WITH AN INTEREST IN THE COMMON PROPERTY IN PROPORTION TO THE UNIT ENTITLEMENT OF THE STRATA LOT AS SHOWN ON FORM V
Features	Landscaped, Near Park, Paved, Views, Waterfront, Near Golf Course, Level	Ownership	Freehold, Strata
View	Lake, Mountains, Water, Valley		
Waterfront	Lake, Waterfront		

BUILDING FEATURES

Finished Area	1,792 Sq. Ft.	Fireplace	1 Fireplace (Gas)
Year Built	2024	Parking	1 Garage Space Attached, Garage, On Site Strata Parking Type:Part of Strata/Assoc Lot
Storeys	2	Construction	Wood Frame, Fiber Cement
Pool	Pool, In Ground, Outdoor	Foundation	Concrete Perimeter
A/C	Wall Units, Heat Pump	Exterior Features	Balcony
Heating	Heat Pump		
Interior Features	Kitchen Island, Double Vanity, High Ceilings, Vaulted Ceilings		
Monthly Fees	\$531.59		

ROOM SIZES

Main Level

Kitchen: 13'9" x 12'11"
Laundry: 12'5" x 6'6"
Living Room: 12'11" x 26'0"
3-Piece Bathroom: 8'6" x 5'0"

Second Level

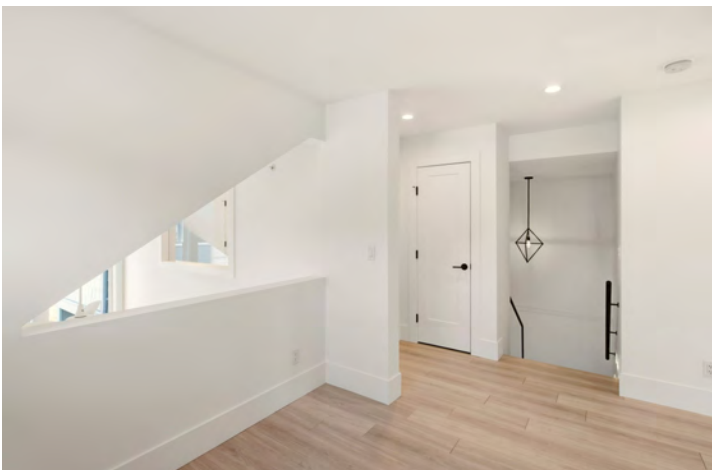
4-Piece Bathroom: 9'2" x 5'1"
Bedroom: 9'4" x 15'7"
Primary Bedroom: 13'0" x 10'4"
4-Piece Ensuite Bath: 6'8" x 12'0"
Bonus Room: 9'7" x 10'5"
Bedroom: 13'0" x 12'2"













3170 Landry Crescent, Summerland, BC

Main Floor Exterior Area 771.11 sq ft
 Interior Area 685.64 sq ft
 Excluded Area 224.20 sq ft



PREPARED: 2026/03/11



While regions are excluded from total floor area in IGUIDE floor plans. All room dimensions and floor areas must be considered approximate and are subject to independent verification.

3170 Landry Crescent, Summerland, BC

1st Floor Exterior Area 1020.67 sq ft
 Interior Area 916.78 sq ft



PREPARED: 2026/03/11



While regions are excluded from total floor area in IGUIDE floor plans. All room dimensions and floor areas must be considered approximate and are subject to independent verification.

EXCEPTIONAL FEATURES

- A beautifully designed residence offering approximately 1,792 square feet of well planned living space across two levels
- Three bedrooms and three bathrooms designed with comfort, flexibility, and a consistent, quality finishing palette throughout
- The main level features an open-concept layout ideal for everyday living and entertaining, enhanced by high ceilings, stair lighting, and frameless glass railings
- The upper level offers additional flexibility with a loft-style bonus space overlooking the main living area
- Finishing details include wide plank luxury vinyl flooring in a warm sand tone, engineered stone surfaces, and modern flat-panel cabinetry throughout
- Large windows, including floor-to-ceiling wall of windows on the main level, create a bright interior and while capturing scenic lake views, along with orchard and mountain vistas
- Enhanced comfort and convenience with features including ductless wall-mounted air conditioning units in every room, matte black hardware, and a modern lighting package
- A main-level outdoor living area positioned off the kitchen and living space, offers a tiled patio with a built-in outdoor kitchen and ample space for lounging and dining
- The garage offers heated single-car parking with direct access to the home
- The front approach is finished with paver stone and stamped concrete, complemented by low-maintenance landscaping for a clean, coastal-inspired arrival
- Ideally located within a beachfront community in Summerland, with access to a clubhouse featuring an outdoor pool, wet bar, and BBQ area
- Minutes from world-class wineries, golf courses, lake activities, schools, and downtown Penticton, offering a balance of recreation and convenience
- A well-appointed, move-in-ready home offering harmony in modern design, comfort, and relaxed lakeside living

Inclusions

- Fisher & Paykel refrigerator/freezer
- Fisher & Paykel mount steam oven
- Fisher & Paykel hood fan
- Fisher & Paykel gas range
- 2 x Fisher & Paykel dishwasher drawers
- LG washer
- LG dryer
- Marvel wine cooler

Mechanical

- Carrier furnace
- Carrier ductless A/C
- 200-amp service panel
- Navien on demand
- Aube and Nuheat thermostats
- Fantech HERO fresh air ventilation

MAIN LEVEL

Kitchen

- Luxury vinyl plank flooring
- Flat-panel cabinetry in a soft sand finish with soft-close hardware
- Central island with deep wood-stained countertop, double drop-in sink, and black faucet, with seating for three
- Engineered stone countertops with wood grain tile backsplash at the main cooking area
- Cabinetry extending to the ceiling, Fisher & Paykel appliance package including gas range, built-in steam oven, panelled refrigerator/freezer, and double-drawer dishwasher
- Open-concept dining area seamlessly connected to the main living space
- Tongue-and-groove wood shiplap feature wall with high transom window and a modern glass chandelier finish the space
- Large sliding glass doors open to the covered patio space and outdoor kitchen

Living

- Central gas fireplace with tile surround and wood mantel
- Vaulted ceilings enhancing the sense of space and light
- Expansive floor-to-ceiling windows with views of the lake and surrounding mountains

Laundry

- Located off the garage entry for everyday convenience
- Bright space with large window overlooking the apple orchard
- Sand-tone cabinetry with soft-close hardware
- Engineered stone countertop with under-mount Blanco sink
- LG stacking front load washer and dryer
- Built-in Marvel wine cooler

3-Piece Bathroom

- Mosaic, heated tile floor
- Vanity with modern flat panel cabinetry with soft close hardware
- Engineered stone countertop with Under-mount sink
- Large wall mounted vanity mirror with modern linear light above
- Fully tiled, frameless glass walk-in shower with black matte faucets

UPPER LEVEL

Bonus Room

- Open-to-below overlooking the main living area
- Large transom window providing natural light
- Flexible space suited for a reading nook, home office, or quiet retreat

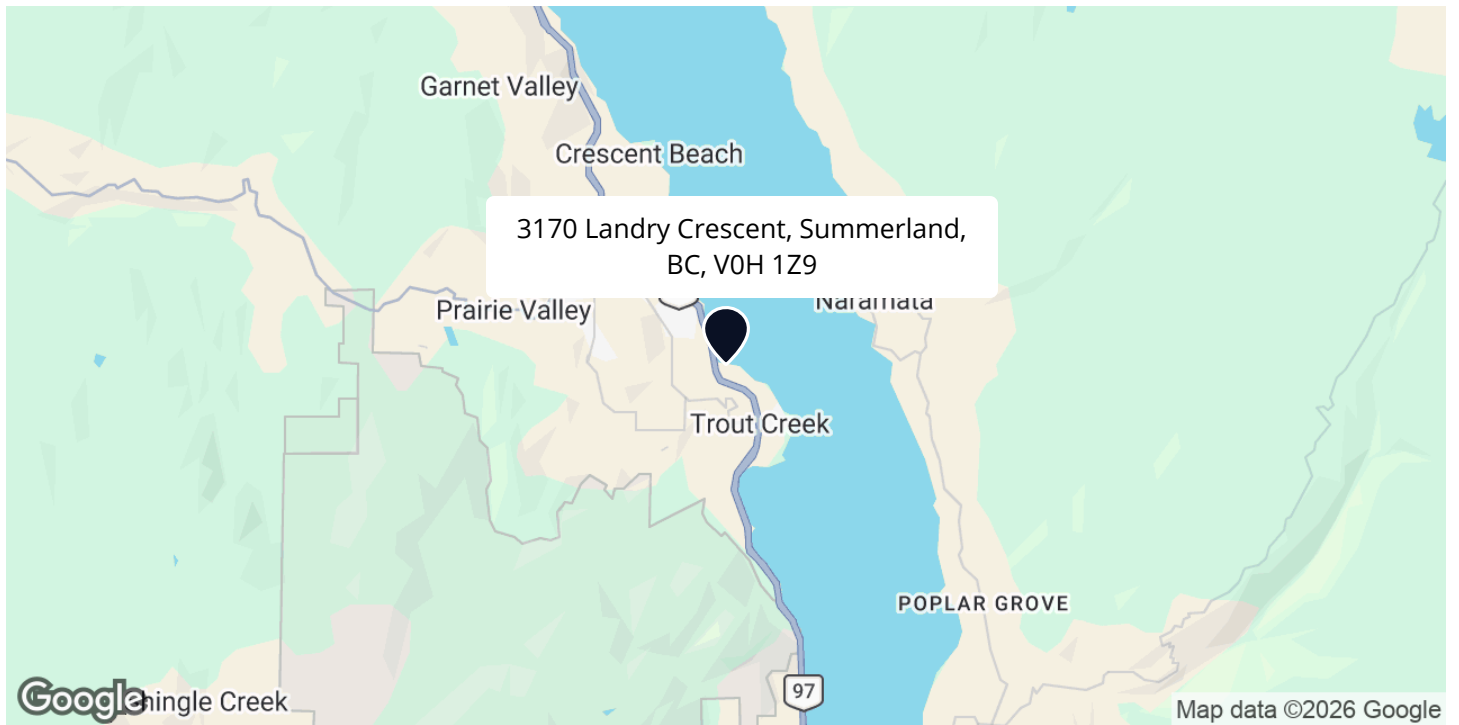
Three Bedrooms

- Primary bedroom features luxury vinyl plank flooring, a large window capturing lake views, two closets with built-in organizers, an interior window overlooking the lower living area
- The second bedroom features luxury vinyl plank flooring, two windows with orchard and mountain views, a double-door closet with built-ins
- The third bedroom features luxury vinyl plank flooring, oversized window overlooking the apple orchard and surrounding mountains, two closets with custom built-ins

Two Full Bahrooms

- 4-piece ensuite features heated tile flooring, a vanity with flat-panel sand-tone cabinetry, engineered stone countertop with two under mount sinks, soft-close hardware, wall-mounted faucets, under-cabinet lighting, and a fully tiled walk-in shower with rain and wand shower heads
- 4-piece bathroom features, heated tile flooring, a vanity with flat-front woodgrain cabinetry, engineered stone countertop with under-mount sink, a tub/shower combination with tile surround

LOCATION



SCHOOLS

8 public & 1 Catholic schools serve this home. There are 3 private schools nearby.



PARKS & REC

1 sports field, 3 beaches and 9 other facilities are found in major parks near this home.



*Lakehouse is the Perfect
Opportunity
To Live on the Lake*

You can take full advantage of a lakeshore lifestyle at an affordable price! All of the homes provide the ability to get up in the morning, carry your paddle board to the beach and enjoy a peaceful morning paddle before even starting your day!

— Gregory Dusik

Follow Jane Hoffman Realty



PRESENTED BY

GREGORY DUSIK

Personal Real Estate Corporation

250-869-2806

greg@janehoffman.com



CO-LISTED BY

ISAAC TIEN

Real Estate Professional

250-826-4579

isaac@janehoffman.com



JANE HOFFMAN
REALTY

250-866-0088
inquiry@janehoffman.com
janehoffman.com

100 – 730 Vaughan Ave
Kelowna, BC
V1Y 7E4



JANE HOFFMAN
REALTY

The Benchmark for *Excellence*



JANE HOFFMAN REALTY

100 - 730 Vaughan Ave • Kelowna, BC • V1Y 7E4
250-866-0088 • www.janehoffman.com