



3080 LANDRY CRESCENT, SUMMERLAND

Presented by

Gregory Dusik

Personal Real Estate Corporation



JANE HOFFMAN
REALTY



3080 LANDRY CRESCENT, SUMMERLAND

Waterfront living at Lakehouse Summerland, an exclusive lakeside community perched along the shores of Okanagan Lake. This beautifully designed 4 bedroom, 3 bath residence blends contemporary architecture with refined finishes inspired by the natural tones of the Okanagan landscape.

The main level is designed for effortless living and entertaining, with soaring ceilings and expansive windows that fill the open-concept living and dining areas with natural light while capturing lake and mountain views.

A modern gas fireplace anchors the living space, while the chef-inspired kitchen features sleek flat-panel cabinetry, engineered stone countertops, a contrasting wood-tone island and premium Fisher & Paykel appliances. Sliding doors extend the living space to an expansive deck, ideal for outdoor dining and relaxed summer evenings overlooking the surrounding vineyards and hillsides.

Thoughtfully designed, the main level also includes a bedroom, full bath, mudroom with laundry and a convenient servery with wine fridge.

Upstairs, the primary retreat offers lake views, custom closets and a spa-inspired ensuite. Two additional bedrooms, a full bath and a flexible family room complete the upper level.

Residents enjoy resort-style amenities including a pool, hot tub, beach access, fitness centre and lounge deck—just minutes from wineries, golf and Penticton.

DETAILS

Address	3080 Landry Crescent, Summerland, BC, V0H 1Z9	Bedrooms	4
City	Summerland	Bathrooms	3
		Finished Area	2,324 Sq. Ft.

SPECIFICATIONS

Water	Municipal	Zoning	RMD
Sewer	Connected	Legal Description	STRATA LOT 27, PLAN EPS9362, DISTRICT LOT 477, OSOYOOS DIV OF YALE LAND DISTRICT, TOGETHER WITH AN INTEREST IN THE COMMON PROPERTY IN PROPORTION TO THE UNIT ENTITLEMENT OF THE STRATA LOT AS SHOWN ON FORM V
Features	Easy Access, Landscaped, Near Park, Paved, Views, Waterfront, Near Golf Course, Level	Ownership	Freehold, Strata
View	Lake, Mountains, Water, Valley		
Waterfront	Lake, Waterfront		

BUILDING FEATURES

Finished Area	2,324 Sq. Ft.	Fireplace	1 Fireplace (Gas)
Year Built	2024	Parking	1 Garage Space Attached, Garage, On Site Strata Parking Type:Part of Strata/Assoc Lot
Storeys	2	Construction	Wood Frame, Fiber Cement
Pool	Pool, In Ground, Outdoor	Foundation	Concrete Perimeter
A/C	Wall Units, Heat Pump	Exterior Features	Balcony
Heating	Heat Pump		
Interior Features	Kitchen Island, Double Vanity, High Ceilings, Pantry, Wet Bar, Vaulted Ceilings		
Monthly Fees	\$682.04		

ROOM SIZES

Main Level	Second Level
Primary Bedroom: 14'0" x 25'1"	Bonus Room: 18'5" x 8'0"
Living Room: 17'11" x 14'10"	Bedroom: 13'2" x 10'5"
Laundry: 7'5" x 6'2"	Bedroom: 12'5" x 12'0"
Kitchen: 9'0" x 14'11"	Ensuite Bath: 6'7" x 12'5"
Dining Room: 14'3" x 8'8"	4-Piece Bathroom: 9'6" x 4'11"
Bedroom: 12'7" x 12'0"	
3-Piece Bathroom: 8'6" x 4'11"	

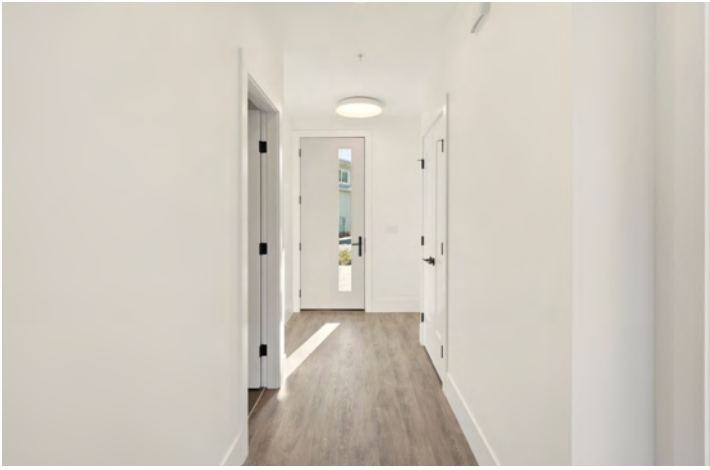












3080 Landry Crescent, Summerland, BC

Main/first Floor Exterior Area 1223.10 sq ft
 Interior Area 1111.93 sq ft
 Excluded Area 229.20 sq ft



PREPARED: 2026/03/03



While regions are excluded from total floor area in IGUIDE floor plans, All room dimensions and floor areas must be considered approximate and are subject to independent verification.

3080 Landry Crescent, Summerland, BC

Second Floor Exterior Area 1101.06 sq ft
 Interior Area 989.91 sq ft



PREPARED: 2026/03/03



While regions are excluded from total floor area in IGUIDE floor plans, All room dimensions and floor areas must be considered approximate and are subject to independent verification.

EXCEPTIONAL FEATURES

- A beautifully designed residence offering approximately 2,324 square feet of thoughtfully planned living space across two levels
- Four bedrooms and three bathrooms designed with comfort, flexibility, and a consistent, finishing palette, including heated tile flooring and contemporary European-style cabinetry
- The main level features an expansive, open-concept layout ideal for everyday living and entertaining, enhanced by soaring ceilings and a seamless connection to outdoor living spaces
- The upper level offers additional flexibility with a versatile loft-style space overlooking the main living area and capturing the scenic lake and mountain views
- Finishing details include driftwood tones, luxury vinyl plank flooring, engineered stone and quartz surfaces and modern flat-front cabinetry
- Large windows throughout the home create a bright interior and capture unobstructed, front-row views of Okanagan Lake and the surrounding mountains
- Enhanced comfort and convenience with features including wall-mounted air conditioning units, remote-controlled window coverings, integrated storage solutions, and a modern lighting package
- The main level deck is positioned off the kitchen and living area, offering panoramic lake and mountain views, a built-in outdoor kitchen to enjoy seamless indoor-outdoor living
- The upper deck provides an additional outdoor retreat with elevated lake views, glass railings, and hot tub-ready connections
- The garage offers heated single-car parking with a finished concrete floor and direct interior access
- The driveway and front approach provide additional parking with paver stone detailing and a clean, low-maintenance arrival experience
- The outdoor spaces are thoughtfully designed with multiple seating areas, direct access to the lakefront, and a natural connection to the surrounding landscape
- Ideally located within a beachfront community in Summerland, with access to a clubhouse featuring an outdoor pool, wet bar, and BBQ area
- Minutes from world-class wineries, golf courses, lake activities, schools, and downtown Penticton, offering a balance of recreation and convenience
- A well-appointed, move-in-ready home offering a refined blend of modern design, comfort, and enjoyable lakeside living

Inclusions

- Fisher & Paykel gas range
- Fisher and Paykel refrigerator
- 2 x Fisher & Paykel dishwasher
- LG front-load washer
- LG front load dryer
- Marvel beverage fridge
- Silhouette beverage fridge

Mechanical

- Carrier furnace
- Navien tankless hot water
- Fantech air ventilation
- Nuheat and Aube thermostats
- 200-amp service panel
- Stelpro Pulsair heater
- Somfy remote blinds

MAIN LEVEL

Kitchen

- Central island with rich wood countertop and drop-in double Blanco sink
- European-style cabinetry in soft grey tones with modern black hardware
- Quartz countertops with tile and wood plank backsplash at the main cooking area
- Built-in pantry storage with integrated drawer organization
- Fisher & Paykel 5-burner gas range
- Black stainless-steel wall-mounted range hood
- Paneled Fisher & Paykel refrigerator/freezer
- Fisher & Paykel double-drawer dishwasher
- Glass patio doors to lakeview deck

Butler's Pantry

- Luxury vinyl flooring
- Built-in upper and lower cabinetry with quartz countertop
- Under-mount bar sink
- Open wall shelving for additional storage and organization
- Built-in Marvel beverage fridge

Dining

- The dining area is defined by a statement chandelier and recessed lighting
- Positioned within the open-concept main living space for seamless flow when entertaining

Living

- Gas fireplace with tile surround and wood mantel
- Feature wall with shiplap paneling adds a pleasing element
- Expansive floor-to-ceiling windows capturing lake and mountain views
- Remote-controlled upper window coverings
- Soaring ceilings with remote-controlled ceiling fan
- Bright, open living space designed to maximize natural light and views

Bedroom

- Main floor bedroom features, luxury vinyl flooring, a large window with orchard views and a double door closet with built-ins

Den

- Luxury vinyl flooring
- Direct access to the garage
- Double doors lead to the back patio and lakefront area
- Versatile space suited for a home gym, media room or additional living area

Full Bathroom

- 3-piece bathroom features heated tile floors, a vanity with European style cabinetry, engineered stone countertop with undermount sink, soft close hardware and Riobel black fixtures
- A fully tiled walk-in shower with a frameless glass door

Laundry

- Luxury vinyl flooring, LG front load washer and dryer
- Comfort-height cabinetry with storage below and under-mount stainless steel sink
- Engineered stone countertop
- High transom window providing natural light

UPPER LEVEL

Primary Bedroom

- Primary bedroom features luxury vinyl plank flooring, large windows capturing lake and mountain views, two closets with built-ins, and a 4-piece ensuite

Primary Ensuite Bathroom

- 4-piece ensuite features tile flooring, a vanity with quartz countertop and two under mount sinks, wall-mounted faucets, flat-front cabinetry with soft-close hardware
- Fully tiled walk-in shower with ceiling-mounted rain shower head and handheld wand shower head

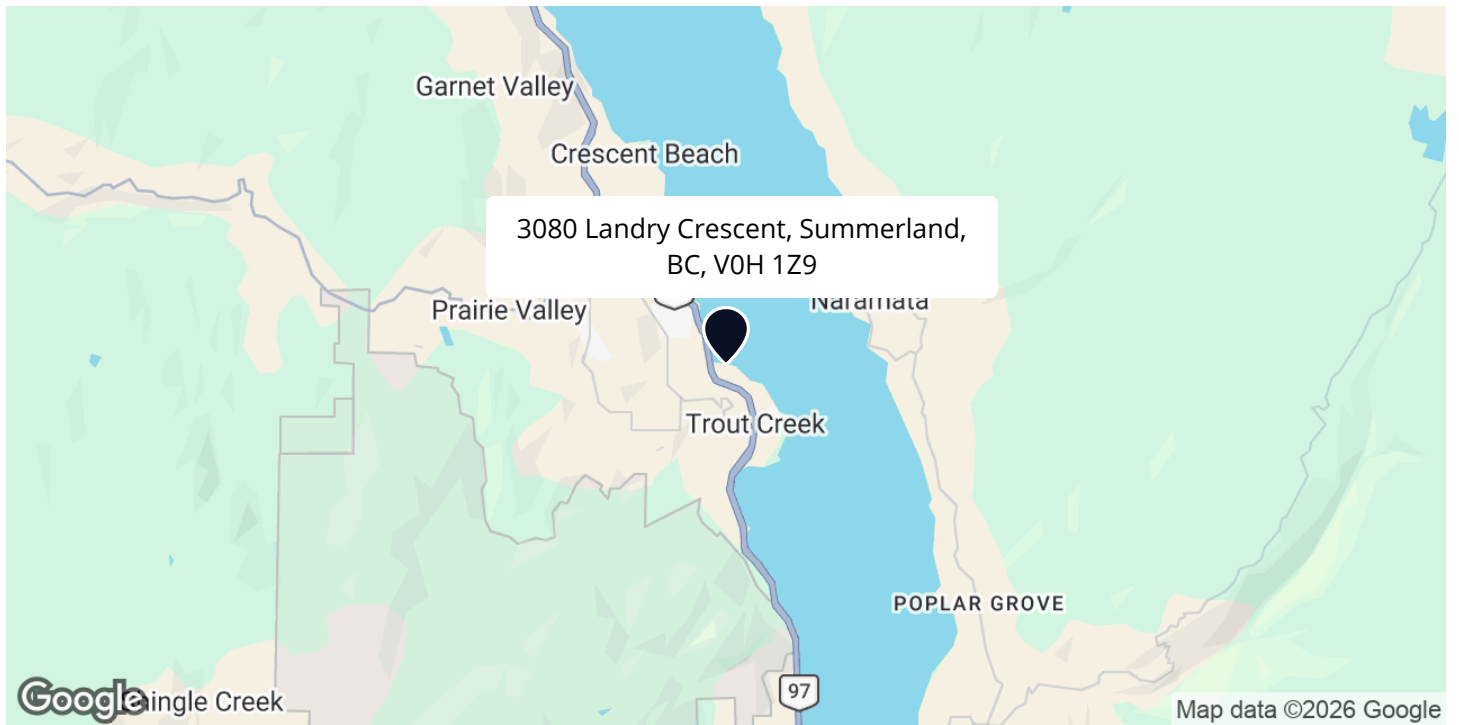
Two Additional Bedrooms

- The second bedroom features luxury vinyl flooring, large window overlooking the apple orchard, and a double-door closet with built-ins
- A third bedroom features luxury vinyl flooring, a large window, and a double-door closet with built-ins

Full Bathroom

- 4-piece bathroom features heated tile flooring, a vanity with flat-front cabinetry and soft-close hardware, engineered stone countertop and backsplash
- Tub/shower combination with tile surround

LOCATION



SCHOOLS

8 public & 1 Catholic schools serve this home. There are 3 private schools nearby.



PARKS & REC

1 sports field, 3 beaches and 9 other facilities are found in major parks near this home.



*Lakehouse is the Perfect
Opportunity
To Live on the Lake*

You can take full advantage of a lakeshore lifestyle at an affordable price! All of the homes provide the ability to get up in the morning, carry your paddle board to the beach and enjoy a peaceful morning paddle before even starting your day!

— Gregory Dusik

Follow Jane Hoffman Realty



PRESENTED BY

GREGORY DUSIK

Personal Real Estate Corporation

250-869-2806

greg@janehoffman.com



CO-LISTED BY

ISAAC TIEN

Real Estate Professional

250-826-4579

isaac@janehoffman.com



JANE HOFFMAN
REALTY

250-866-0088
inquiry@janehoffman.com
janehoffman.com

100 – 730 Vaughan Ave
Kelowna, BC
V1Y 7E4



JANE HOFFMAN
REALTY

The Benchmark for *Excellence*



JANE HOFFMAN REALTY

100 - 730 Vaughan Ave • Kelowna, BC • V1Y 7E4
250-866-0088 • www.janehoffman.com