

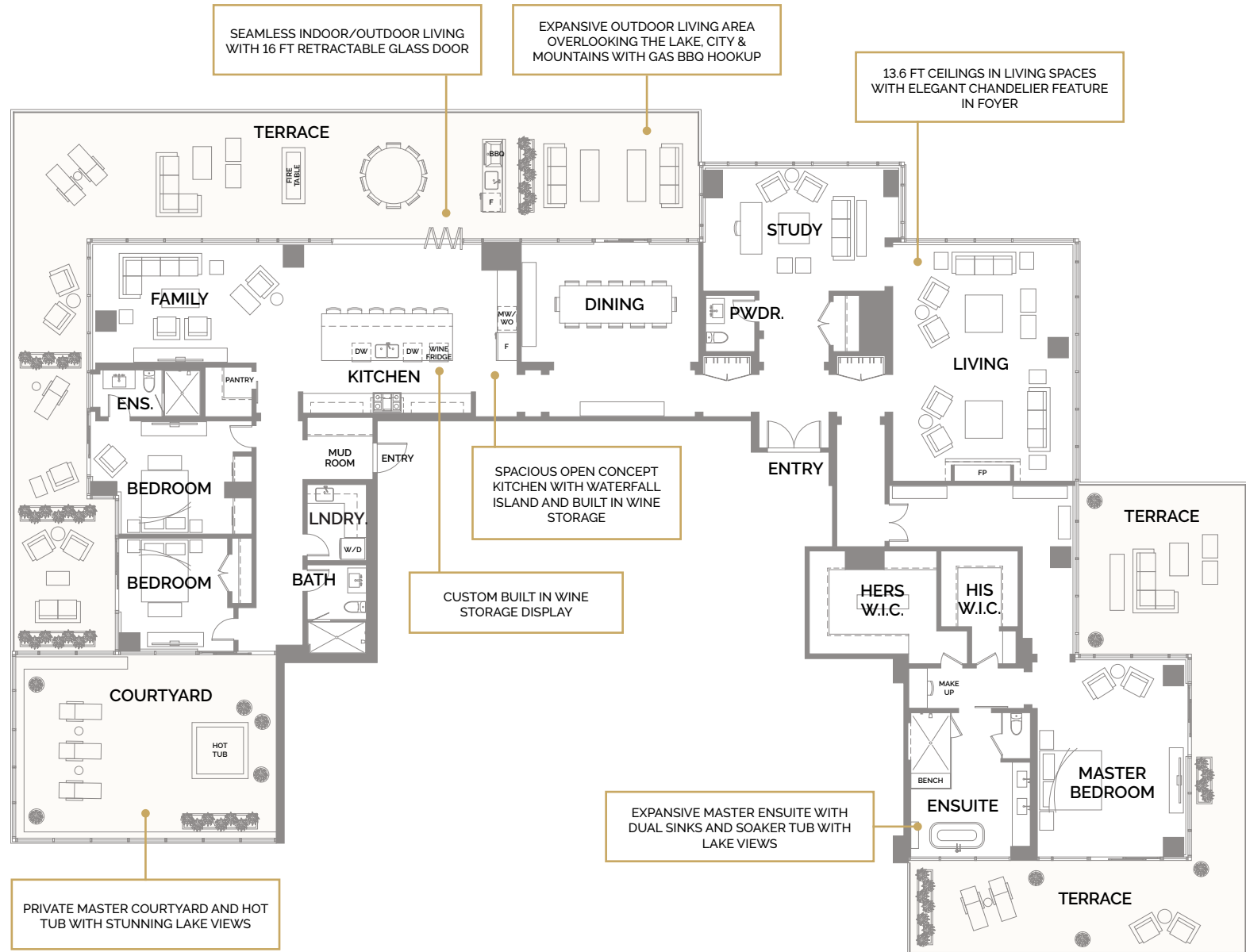
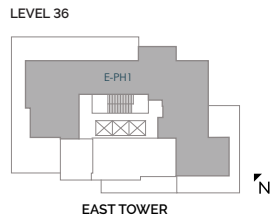
PH1



EAST TOWER

PENTHOUSE 1 #3601
3 BEDROOM + DEN, 3.5 BATH
INTERIOR 4,359 SQ. FT.
EXTERIOR 2,796 SQ. FT.

TOTAL 7,155 SQ. FT.



PH2



WEST TOWER

PENTHOUSE 2 #2901

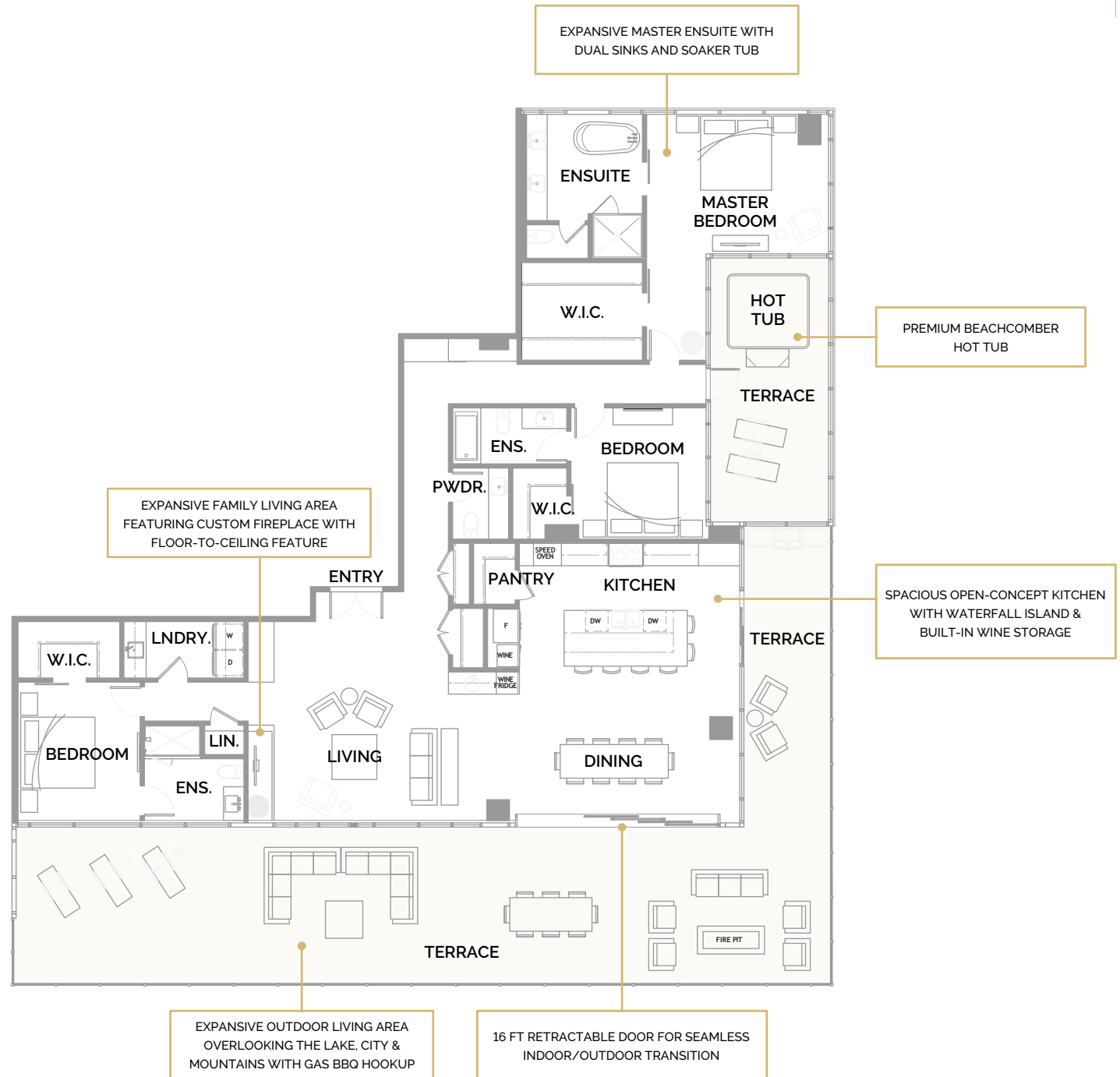
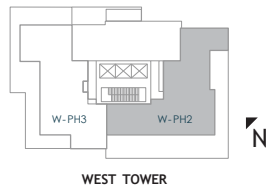
3 BEDROOM, 3.5 BATH

INTERIOR 2,466 SQ. FT.

EXTERIOR 1,482 SQ. FT.

TOTAL 3,948 SQ. FT.

LEVEL 29



PH3



WEST TOWER

PENTHOUSE 3 #2902

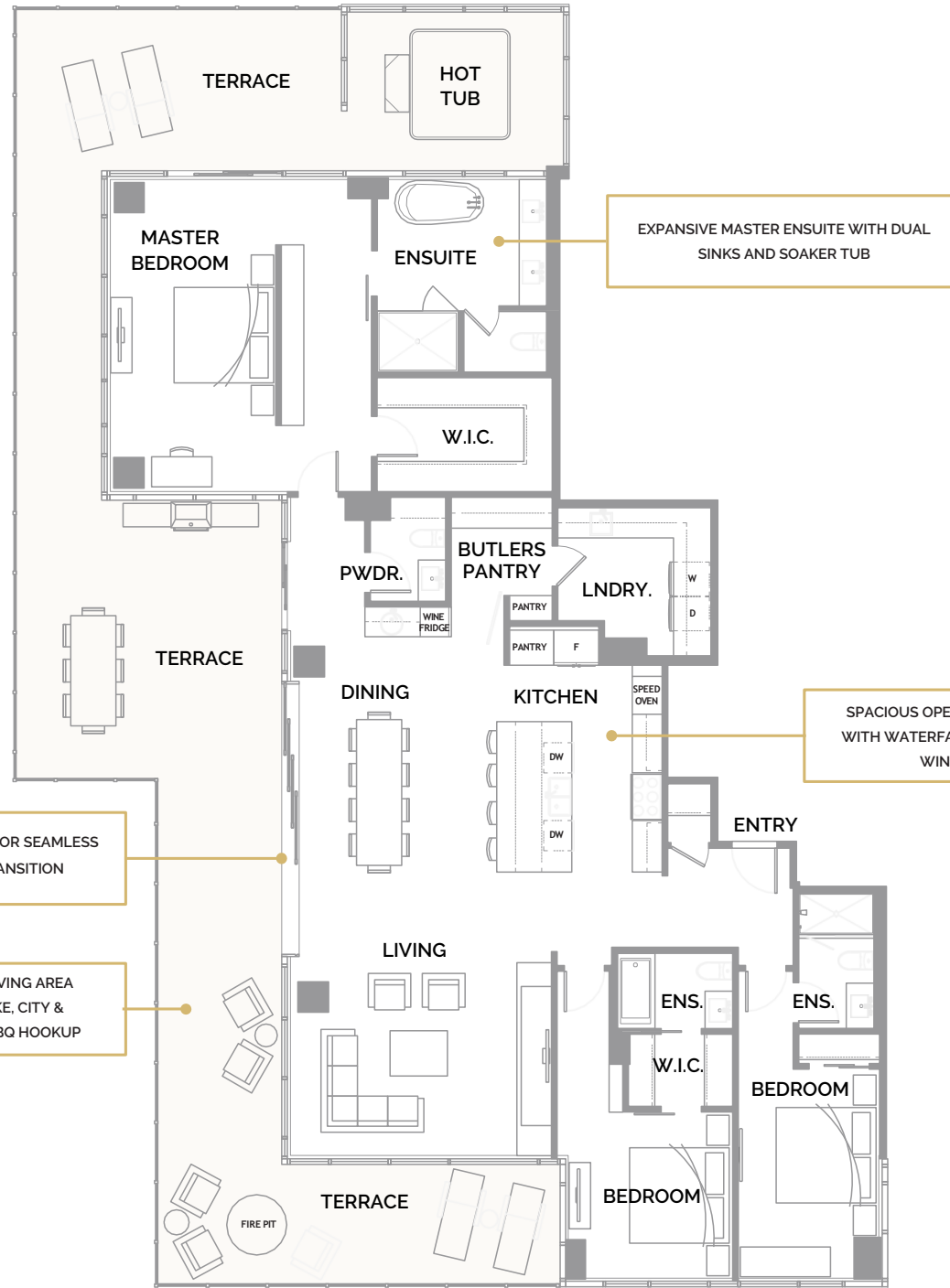
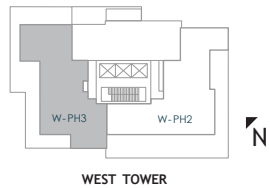
3 BEDROOM, 3.5 BATH

INTERIOR 2,317 SQ. FT.

EXTERIOR 1,298 SQ. FT.

TOTAL 3,615 SQ. FT.

LEVEL 29



EXPANSIVE MASTER ENSUITE WITH DUAL SINKS AND SOAKER TUB

SPACIOUS OPEN-CONCEPT KITCHEN WITH WATERFALL ISLAND & BUILT-IN WINE STORAGE

16 FT RETRACTABLE DOOR FOR SEAMLESS INDOOR/OUTDOOR TRANSITION

EXPANSIVE OUTDOOR LIVING AREA OVERLOOKING THE LAKE, CITY & MOUNTAINS WITH GAS BBQ HOOKUP

SP1

SUB PENTHOUSE 1 #2601, #2701, #2801

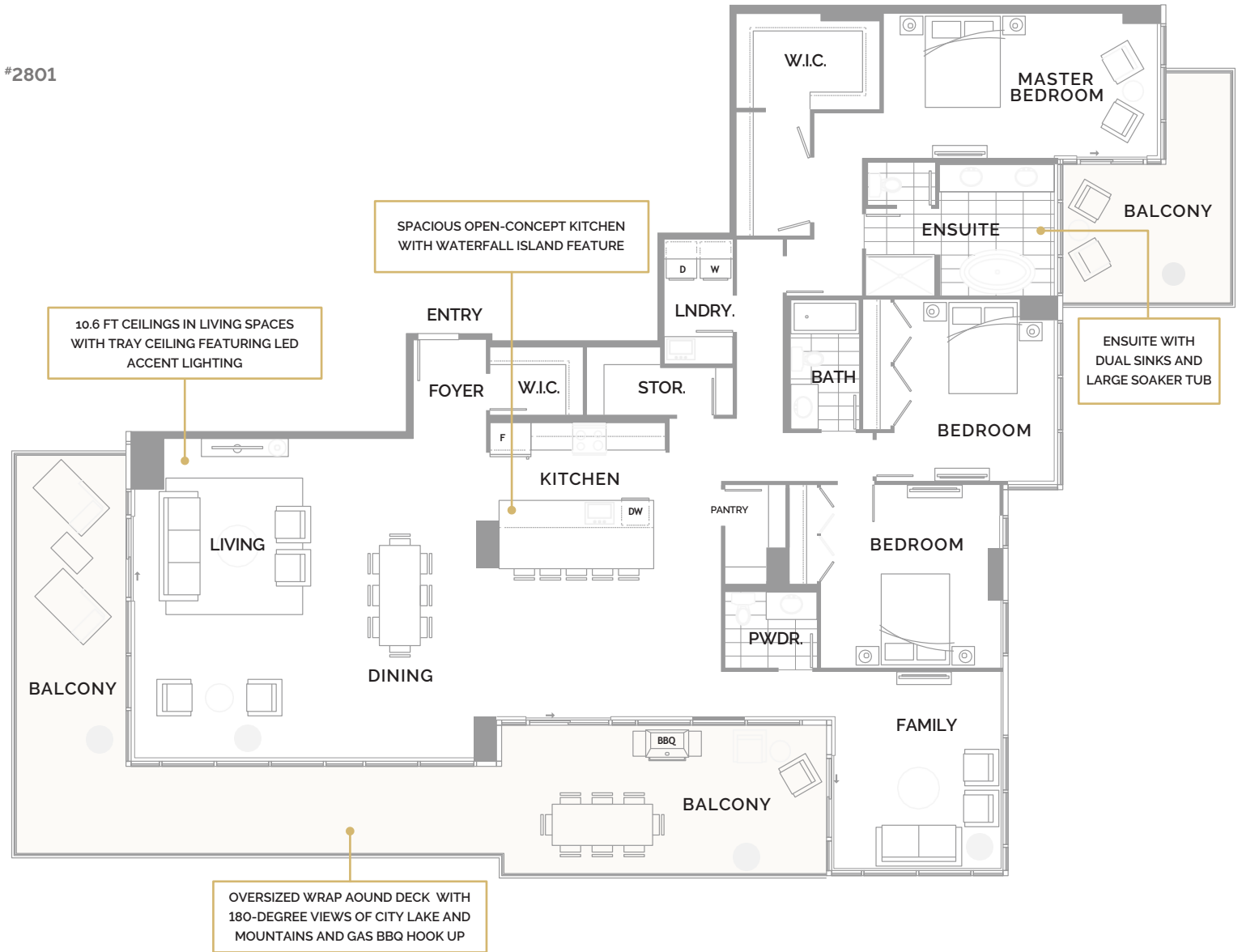
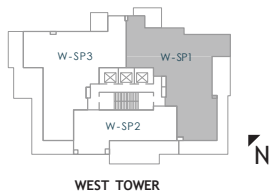
3 BEDROOM + FAMILY, 2.5 BATH

INTERIOR 2,638 SQ. FT.

EXTERIOR 884 SQ. FT.

TOTAL 3,522 SQ. FT.

LEVELS 26 - 28



NOTE: PLAN HAS BEEN ROTATED 90°

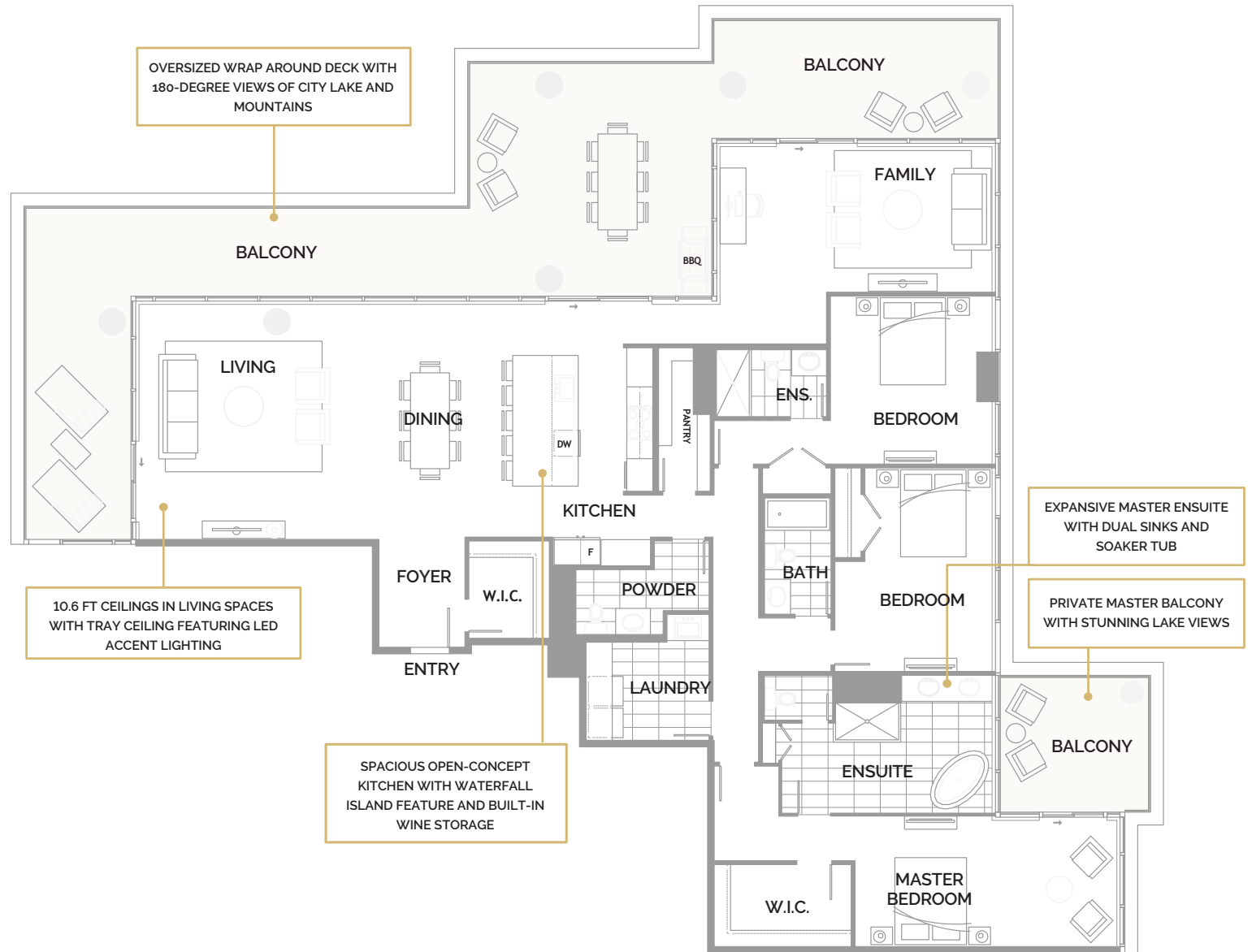
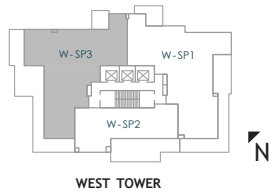
In our continuing effort to improve and maintain the high standard of ONE Water Street development, the developer reserves the right to modify or change plans, specifications, features and prices without notice. Materials may be substituted with equivalent or better at the developer's sole discretion. All dimensions and sizes are approximate and are based on architectural measurements. As reverse, mirrored and/or flipped plans occur throughout the development please see architectural plans if material to your decision to purchase. E.&O.E.

SP3

SUB-PENTHOUSE 3 #2703
3 BEDROOM + FAMILY, 3.5 BATH
 INTERIOR 2,607 SQ. FT.
 EXTERIOR 1,086 SQ. FT.

TOTAL 3,693 SQ. FT.

LEVELS 26 - 28



NOTE: PLAN HAS BEEN ROTATED 90°

In our continuing effort to improve and maintain the high standard of ONE Water Street development, the developer reserves the right to modify or change plans, specifications, features and prices without notice. Materials may be substituted with equivalent or better at the developer's sole discretion. All dimensions and sizes are approximate and are based on architectural measurements. As reverse, mirrored and/or flipped plans occur throughout the development please see architectural plans if material to your decision to purchase. E.&O.E.

I



#1404 & #1504

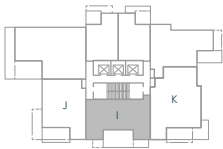
2 BEDROOM + FLEX, 2 BATH

INTERIOR 1,084 Sq. Ft.

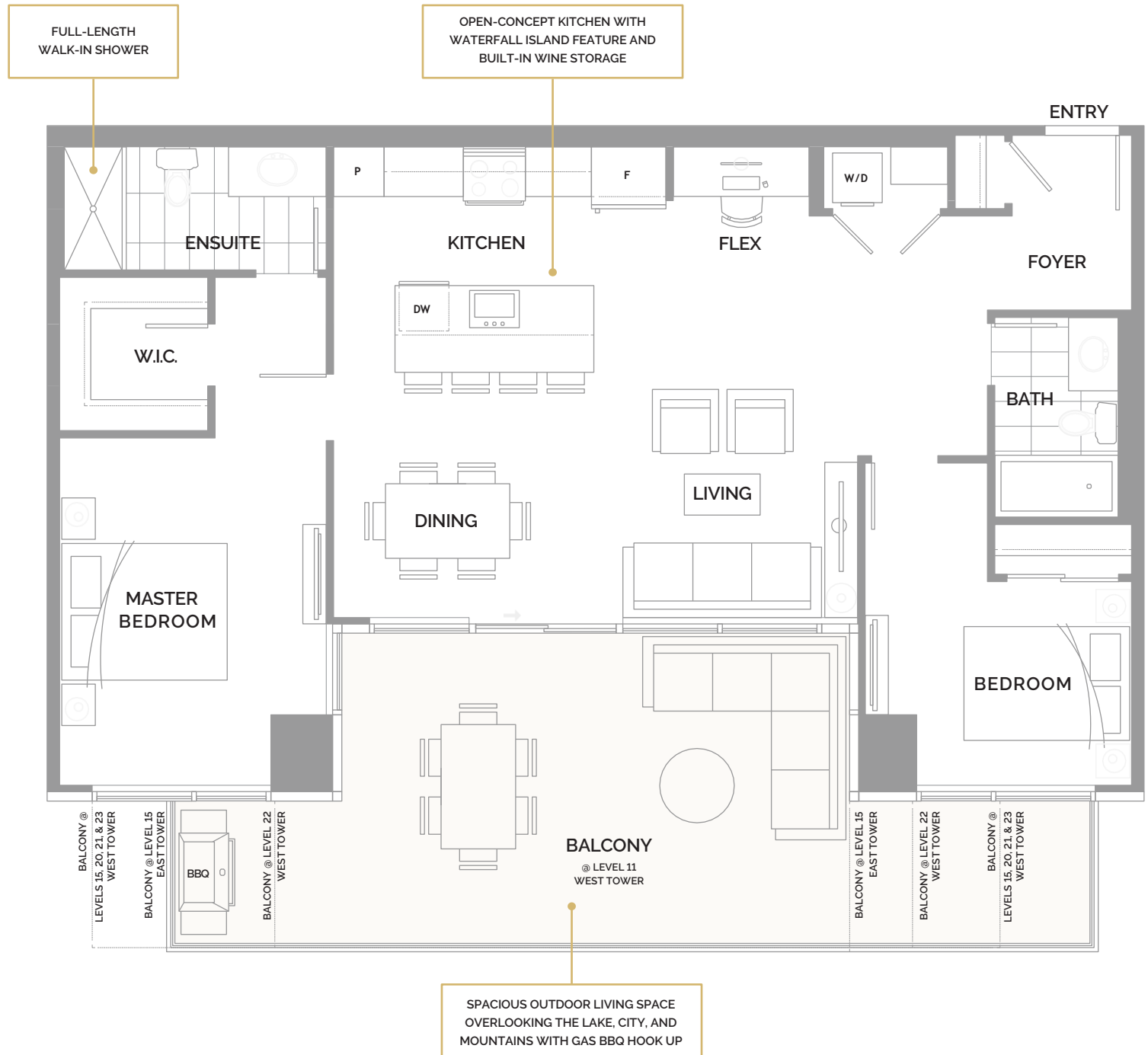
EXTERIOR 235-369 Sq. Ft.

TOTAL 1,319-1,453 Sq. Ft.

LEVEL 11 - 23



EAST & WEST TOWER



In our continuing effort to improve and maintain the high standard of ONE Water Street development, the developer reserves the right to modify or change plans, specifications, features and prices without notice. Materials may be substituted with equivalent or better at the developer's sole discretion. All dimensions and sizes are approximate and are based on architectural measurements. As reverse, mirrored and/or flipped plans occur throughout the development please see architectural plans if material to your decision to purchase. E.&O.E.

J

#1305 & #2205

2 BEDROOM + FLEX, 2 BATH

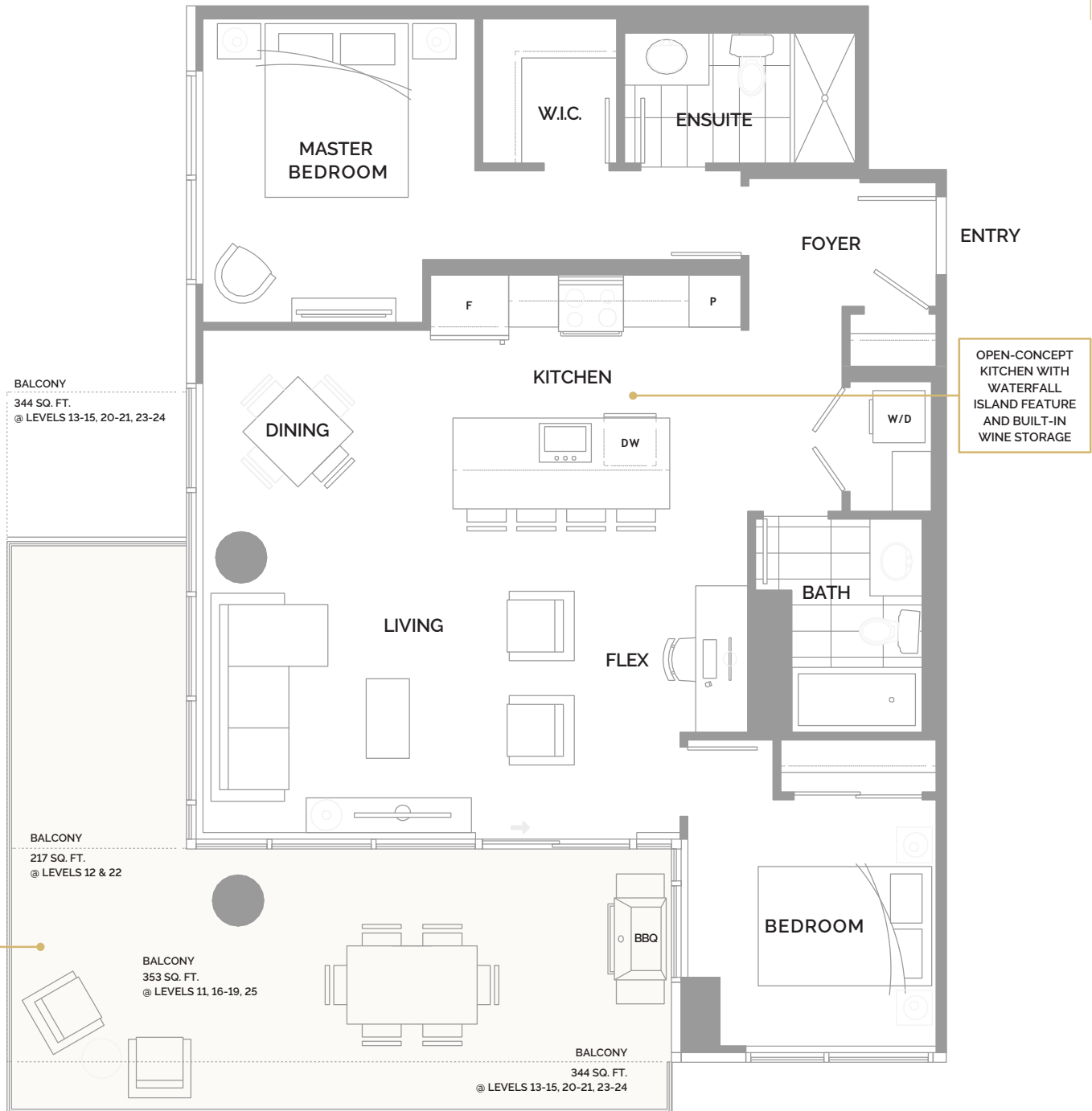
INTERIOR 985 SQ. FT.
EXTERIOR 271-344 SQ. FT.

TOTAL 1,256-1,329 SQ. FT.

LEVEL 11 - 25



EAST & WEST TOWER



In our continuing effort to improve and maintain the high standard of ONE Water Street development, the developer reserves the right to modify or change plans, specifications, features and prices without notice. Materials may be substituted with equivalent or better at the developer's sole discretion. All dimensions and sizes are approximate and are based on architectural measurements. As reverse, mirrored and/or flipped plans occur throughout the development please see architectural plans if material to your decision to purchase. E.&O.E.

ONE WATER STREET

K



#2403

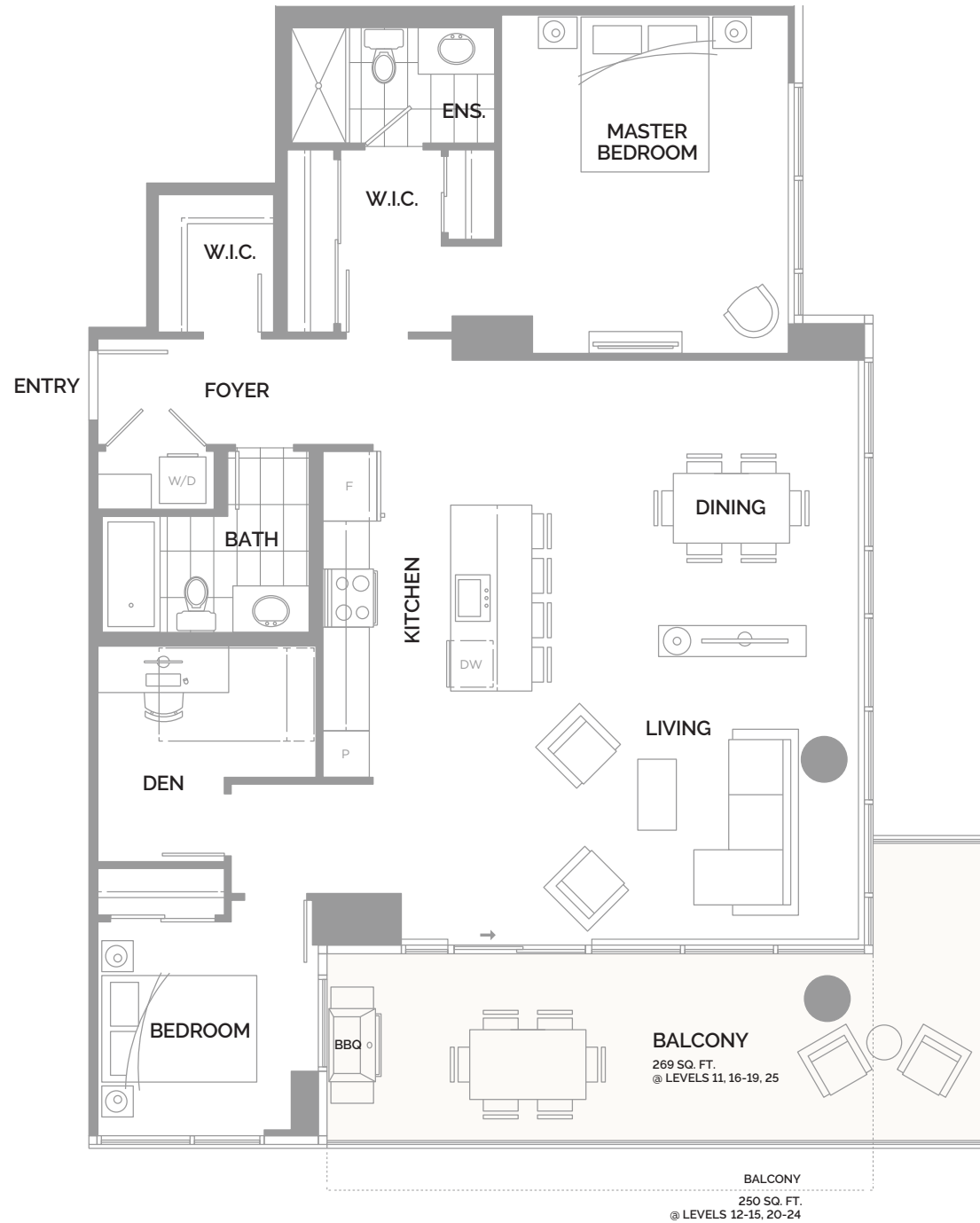
2 BEDROOM + DEN, 2 BATH

INTERIOR 1,311 SQ. FT.

EXTERIOR 250 SQ. FT.

TOTAL 1,561 SQ. FT.

LEVELS 11 - 25



In our continuing effort to improve and maintain the high standard of ONE Water Street development, the developer reserves the right to modify or change plans, specifications, features and prices without notice. Materials may be substituted with equivalent or better at the developer's sole discretion. All dimensions and sizes are approximate and are based on architectural measurements. As reverse, mirrored and/or flipped plans occur throughout the development please see architectural plans if material to your decision to purchase. E.&O.E.

ONE WATER STREET