



JANE HOFFMAN
REALTY

SKI-IN SKI-OUT 2 BEDROOM + LOFT TOWNHOUSE



MARKETED BY AIDAN MYHRE

4-4939 Snow Pines Road
Big White, BC

DETAILS

Address	4-4939 Snow Pines Road Big White, BC	Bedrooms	2
		Bathrooms	2 Full
		Finished Area	1296 sq. ft.

SPECIFICATIONS & FEATURES

Main Level	1147 sq. ft.	Year Built	2005
Loft	77 sq. ft.	Exterior	Wood Siding
Lower Level	72 sq. ft.	Roof	Asphalt/Fibreglass Shingles
Water	Private Utility	Heating	Electric Baseboard
Sewer	Connected	Fireplace	1 Gas Fireplace
Views	Mountain	Ownership	Freehold
Strata Fee	\$411.00	Parking	Attached Single Garage
		Foundation	Concrete

ROOM SIZES

Room Sizes – Main Level

Dining Room: 16' 11 x 10' 9
Kitchen: 10' 6 x 12' 7
Living Room: 16' 11 x 12' 8
4-Piece Bathroom: 6' 9 x 5' 6
Bedroom: 10' 9 x 12' 6
Primary Bedroom: 10' 8 x 12' 7
4-Piece Ensuite: 10' 8 x 4' 11

Room Sizes – Upper Level

Loft: 9' 6 x 8' 3

Room Sizes – Lower Level

Storage: 2' 2 x 8' 5
Garage: 10' 8 x 17' 7

Inclusions

- Inglis washer/dryer
- Whirlpool oven
- Broan hood vent
- Silhouette microwave
- Whirlpool refrigerator
- Frigidaire dishwasher

Note: Although the information herein is believed to be from reliable sources, prospective buyers should satisfy themselves as to its accuracy. All measurements are approximate.



WELCOME TO 4-4939 SNOW PINES ROAD

Partially furnished 2-bedroom, 2-bath condo with incredible SKI IN/SKI OUT access at Big White. Live or vacation at one of the best locations on the mountain, backing onto the Snow Ghost Lift and connecting to Serwa's run.

Experience a cozy chalet vibe with high vaulted ceilings, a rock-surround gas fireplace, hardwood and slate floors, and beautiful alpine views. Unwind after a day on the slopes on the private covered balcony with a hot tub.

The spacious kitchen features custom cabinetry, granite counters, and stainless-steel appliances.

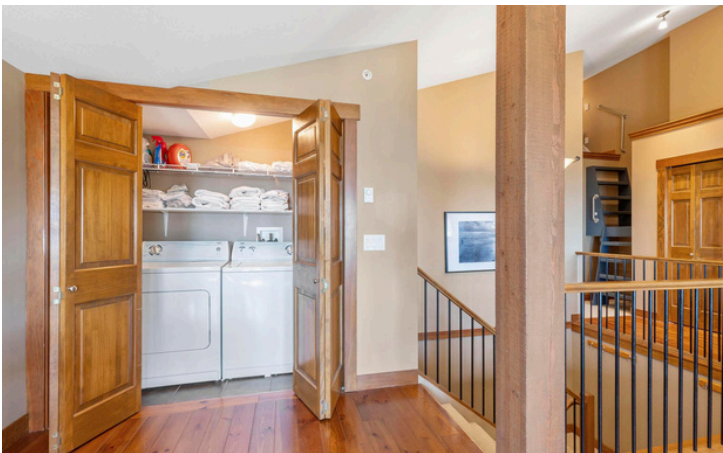
Loft space allows the unit to comfortably sleep 10. Includes a 1-car heated garage.

With skiing, snowboarding, cross-country skiing, and skating in the winter, plus countless hiking and biking trails in the summer, Big White is a year-round destination.

Located about an hour from Kelowna and Kelowna International Airport.

Listing Agent Aidan Myhre | Contact aidan@janehoffman.com or 250-866-0088









4-4939 Snow Pines Rd, Beaverdell, BC

Main Floor Exterior Area 1146.92 sq ft
Interior Area 1067.77 sq ft

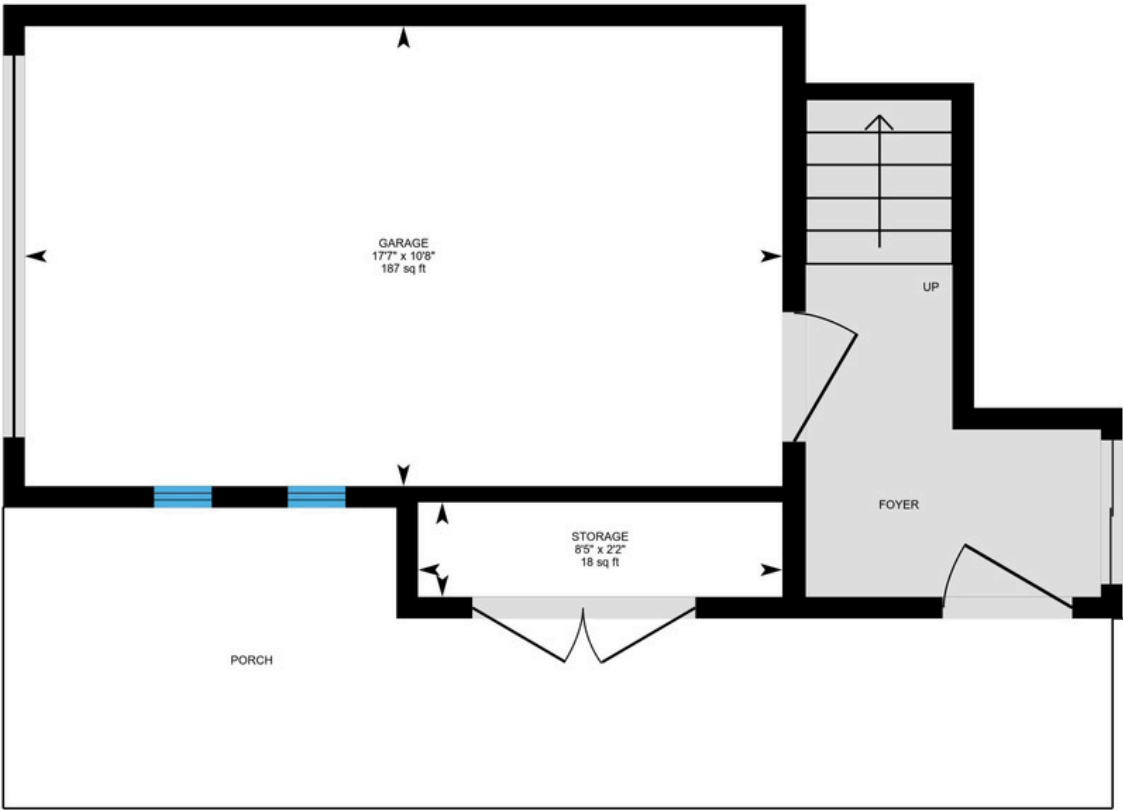


PREPARED: 2024/08/30

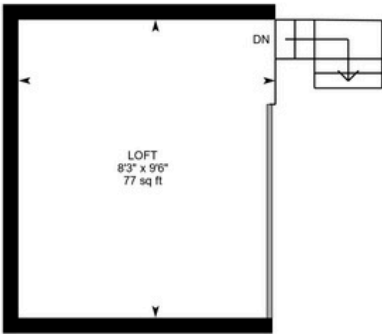
White regions are excluded from total floor area in iGUIDE floor plans. All room dimensions and floor areas must be considered approximate and are subject to independent verification.

4-4939 Snow Pines Rd, Beaverdell, BC

Basement Exterior Area 72.15 sq ft
Interior Area 52.44 sq ft
Excluded Area 234.24 sq ft



Loft Exterior Area 17.72 sq ft
Excluded Area 82.94 sq ft



0 2 4 ft

PREPARED: 2024/08/30



DETAILED FEATURES

Exceptional Features

- Great location for this ski in – ski out condo with 2 bedrooms and 2 bathrooms
- Over 1230 sq. ft. of living space and comes partially furnished
- Kitchen feature stainless steel appliances, wood cabinets and a pantry
- Hardwood flooring throughout
- Enjoy in the stunning alpine views from the hot tub on your balcony
- Backs onto the Snow Ghost lift and connects to Serwa's run
- With the loft space and bunk bedroom this unit sleeps 10 people comfortably
- 1-car heated garage with ski storage
- With skiing, snowboarding, cross-country skiing, and skating in the winter, plus countless hiking and biking trails in the summer, Big White is a year-round destination
- There is a grocery store, liquor store and many restaurants and amenities in the village area
- Located about an hour from Kelowna and Kelowna International Airport

Kitchen

- Wood shaker style cabinetry, gleaming granite counters
- Built-in wine rack
- Stainless-steel appliances, spacious pantry
- Center island with bar seating for three, is illuminated by two pendant fixtures

Living Room / Dining Room

- Soaring vaulted ceilings provide a bright, spacious environment
- Beautiful floor to ceiling stone surrounds the gas fireplace with raised hearth and rustic wood mantle
- Hardwood flooring
- Wall mounted media input
- Large windows capture the scenic alpine views
- Adjacent to the kitchen and living is the spacious dining area defined by a dropdown chandelier
- Glass patio door access to the outdoor hot tub balcony

Three Bedrooms

- Primary bedroom features carpeted flooring, angled ceilings, a large window, a spacious double door closet, and a 4-piece ensuite bathroom
- Second bedroom features carpet flooring, wall mounted media, and a closet, will accommodate two bunk beds
- Upper loft space with room for an additional bed

Two Bathrooms

- 4-piece ensuite attached to the primary bedroom features tile flooring, a vanity with an one sink and tiled counter, wall mounted mirror with bar lighting, and a tub/shower combination
- 4-piece bath features, tile flooring, a vanity with one sink and tiled counter, wall mounted mirror with bar lighting, and a tub/shower combination

4-4939 SNOW PINES ROAD



LISTED BY AIDAN MYHRE

C: 250-305-7652

T: 250-866-0088

E: aidan@janehoffman.com

The logo for Unison, featuring the word "Unison" in a serif font with a blue arc above it.

JANE HOFFMAN REALTY

JANE HOFFMAN REALTY

janehoffman.com | 250-866-0088



JANE HOFFMAN
REALTY

LEADERSHIP WITH EXPERIENCE

250-866-0088

JANEHOFFMAN.COM