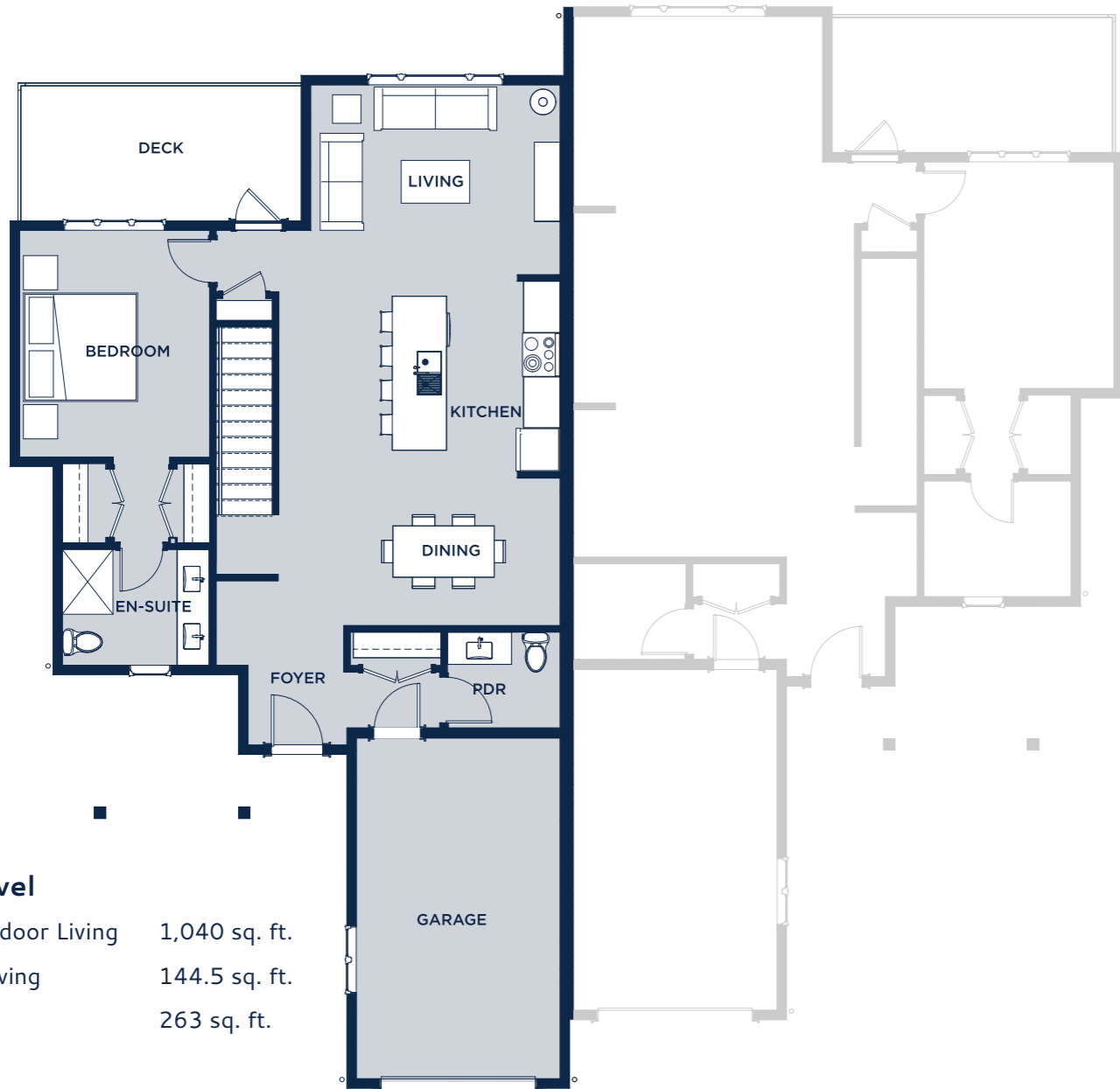




THE
DISTRICT
AT PREDATOR RIDGE

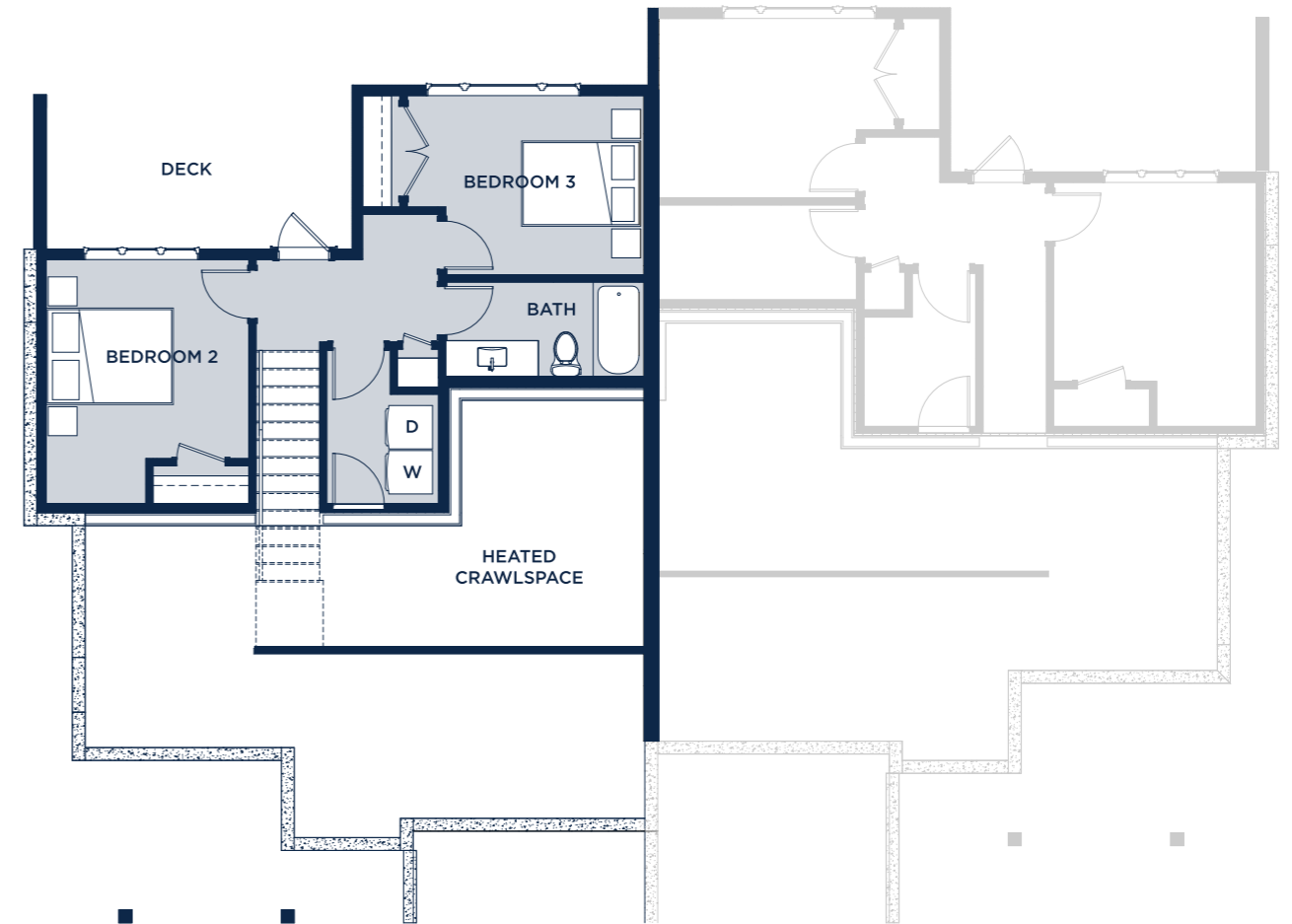
THE VALLEYVIEW
WALK UP WITH BASEMENT WALK OUT





Main Level

Finished Indoor Living 1,040 sq. ft.
 Outdoor Living 144.5 sq. ft.
 Garage 263 sq. ft.



Lower Level

Finished Indoor Living 478 sq. ft.
 Outdoor Living 144.5 sq. ft.

HOME SPECS

Bedrooms	3	Finished Indoor Living	1,518 sq. ft.
Bathrooms	2.5	Outdoor Living	289 sq. ft.
Garage	1 Car	Garage	263 sq. ft.
		Total Square Footage	1,781 sq. ft.

KEY FEATURES

- This beautiful two-level home features the master on the main level, two additional bedrooms with shared bathroom on the lower level, plenty of indoor/outdoor entertaining space. This home features plenty of indoor/outdoor entertaining space.
- On the main level, you'll find a spacious open concept kitchen, living and dining spaces. The kitchen boasts a large 8.5' island, quartz countertop, undermount sinks, and a full stainless steel appliance package including dishwasher, fridge, and gas range. The upper level also features a powder room, and stunning deck with glass panels and a variety of mountain, valley and resort views.
- Enjoy thoughtful finishings throughout the home and extras including washer and dryer in the laundry room, a gas fireplace in the living room, and LED fixtures and pot lighting throughout the home.



DISTRICT
GROUP

Learn More at
PredatorRidge.com/District

