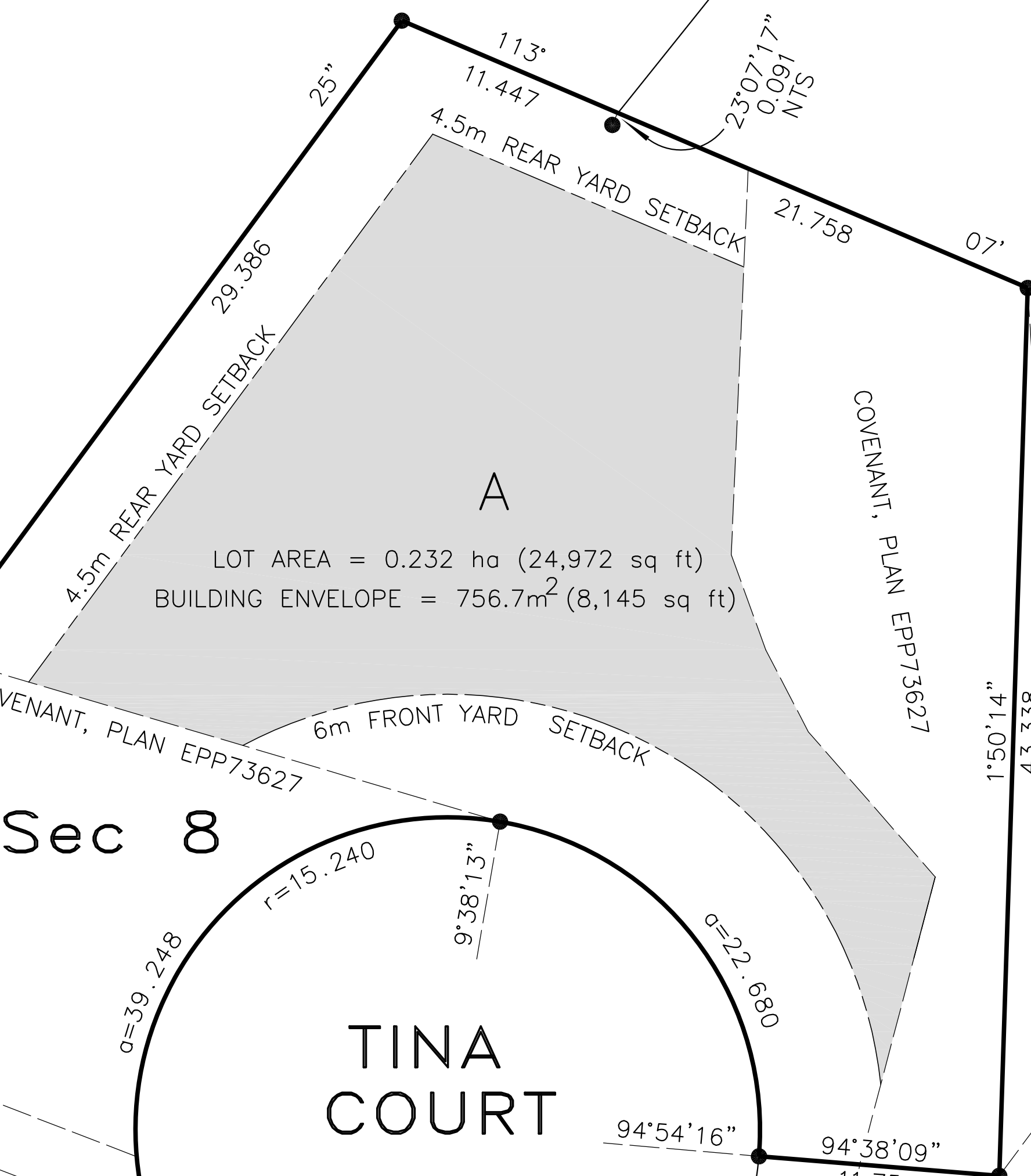


A  
PLAN KAP88538



Sec 8

TINA COURT

Tp 23

B  
0.162 ha

A  
PLAN 33589

A  
PLAN KAP70761

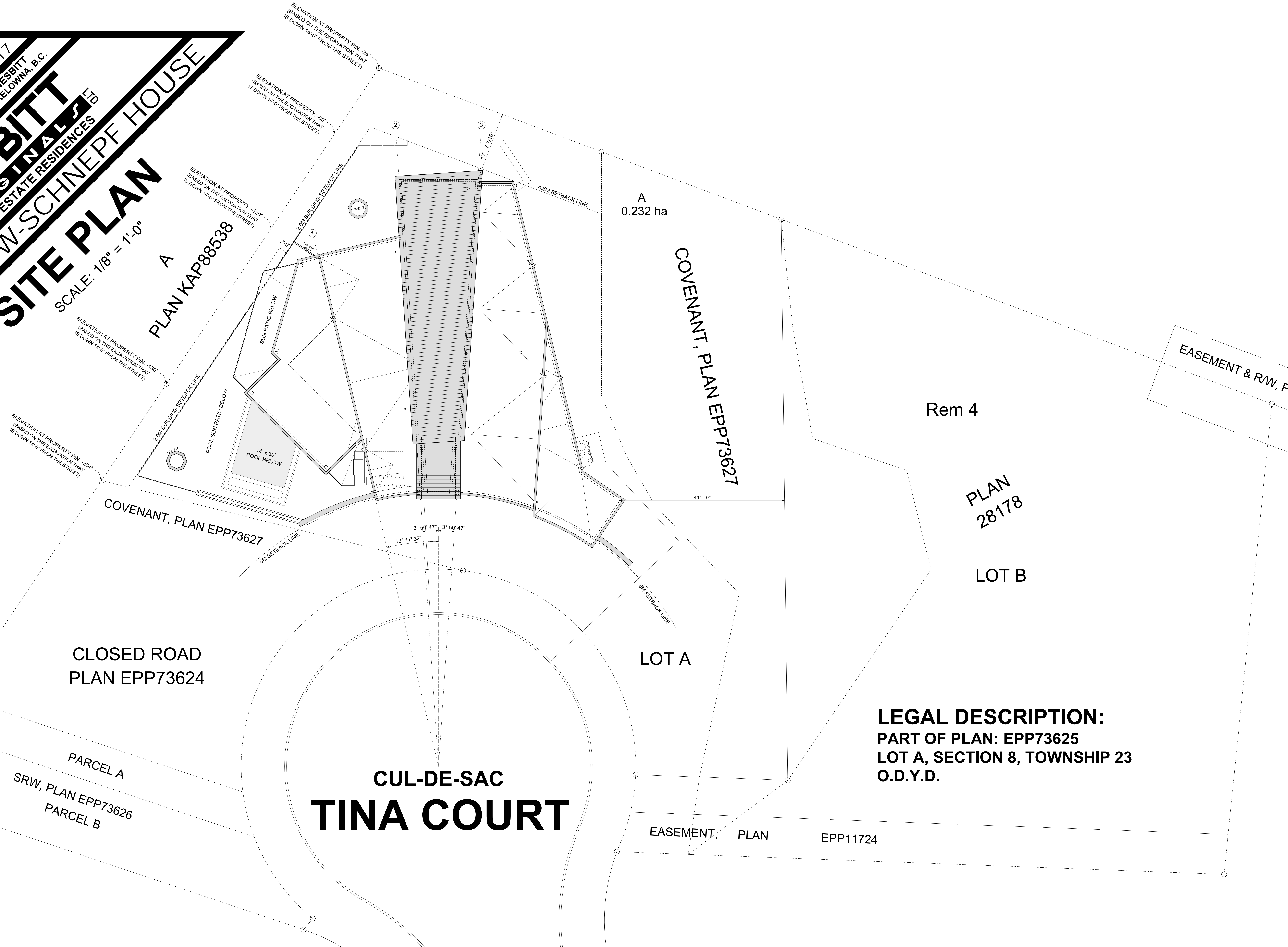
EASEMENT  
IN KAP70762

A  
PLAN KAP57178

EASEMENT,  
PLAN E

14 / DECEMBER / 2017  
 (778) 214-1177 PAUL NESBITT  
 #300 - 1433 ST. PAUL STREET, KELOWNA, B.C.  
**NESBITT ORIGINALS LTD**  
 LUXURY ESTATE RESIDENCES  
**MCKERGOW-SCHNEPF HOUSE**  
**SITE PLAN**  
 SCALE: 1/8" = 1'-0"

**SITE PLAN**  
 SCALE: 1/8" = 1'-0"



A  
 PLAN KAP88538

A  
 0.232 ha

COVENANT, PLAN EPP73627

Rem 4

PLAN  
 28178

LOT B

CLOSED ROAD  
 PLAN EPP73624

LOT A

**LEGAL DESCRIPTION:**  
 PART OF PLAN: EPP73625  
 LOT A, SECTION 8, TOWNSHIP 23  
 O.D.Y.D.

**CUL-DE-SAC  
 TINA COURT**

R/W  
 PLAN  
 A13108

PARCEL A  
 SRW, PLAN EPP73626  
 PARCEL B

EASEMENT, PLAN  
 EPP11724