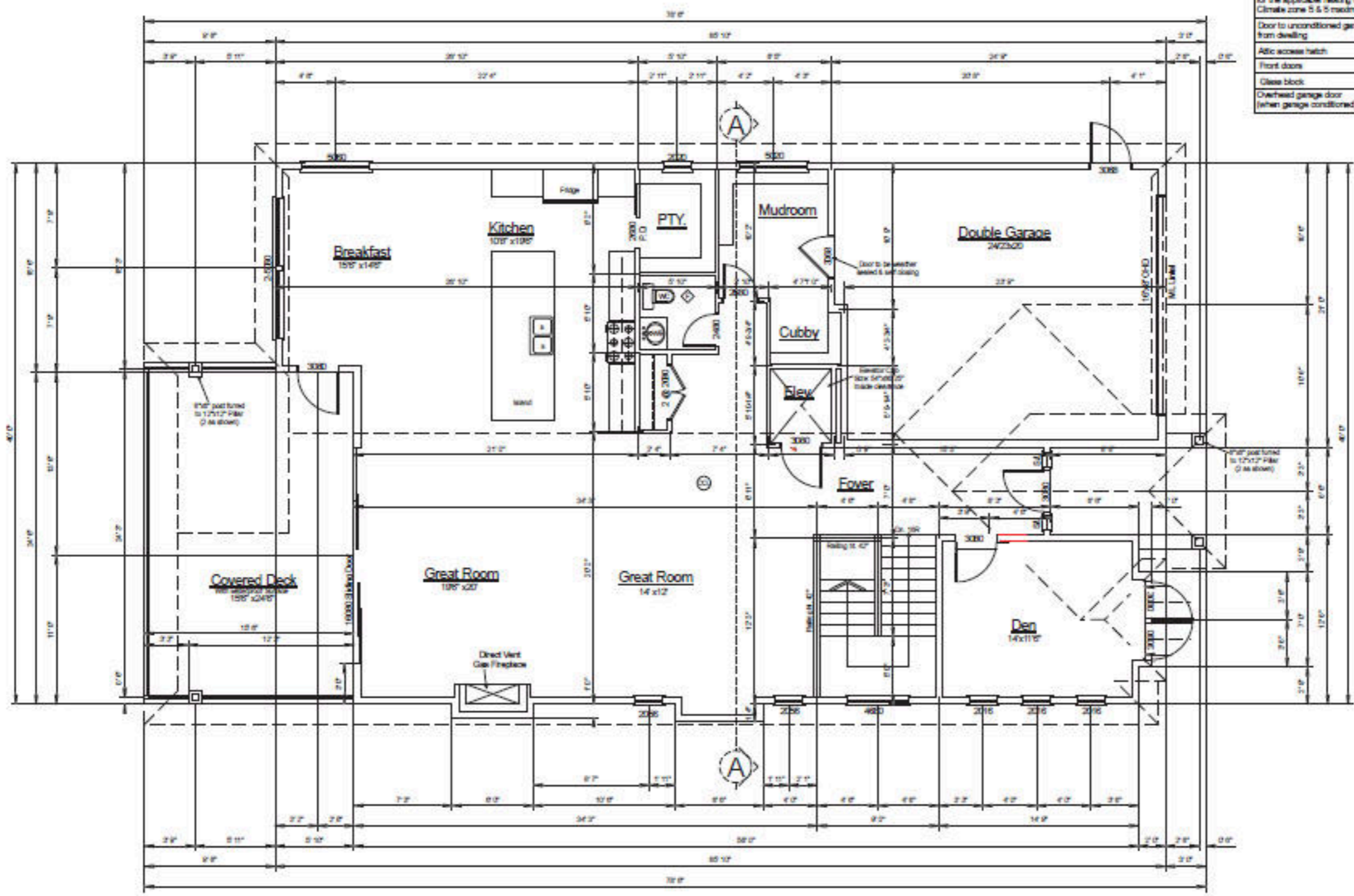


Fenestration (Windows) and Doors to have an overall thermal transmittance (U-value) not greater than the values listed in table 9.36.2.7.A (BCBC latest revision) for the applicable heating degree-day category. Climate zone 5 & 5 maximum U-value to be 1.80	
Door to unconditioned garage from dwelling	U0.2.6 (I40.46)
Attic access hatch	R0.2.6 (I4.4.5)
Front doors	U0.2.6 (I40.46)
Class block	U0.2.9 (I40.51)
Overhead garage door (when garage conditioned)	R0.1.1 (I46.245)



Main Floor Plan
 (100' CLG) 1804 SF
 Garage: 505 SF

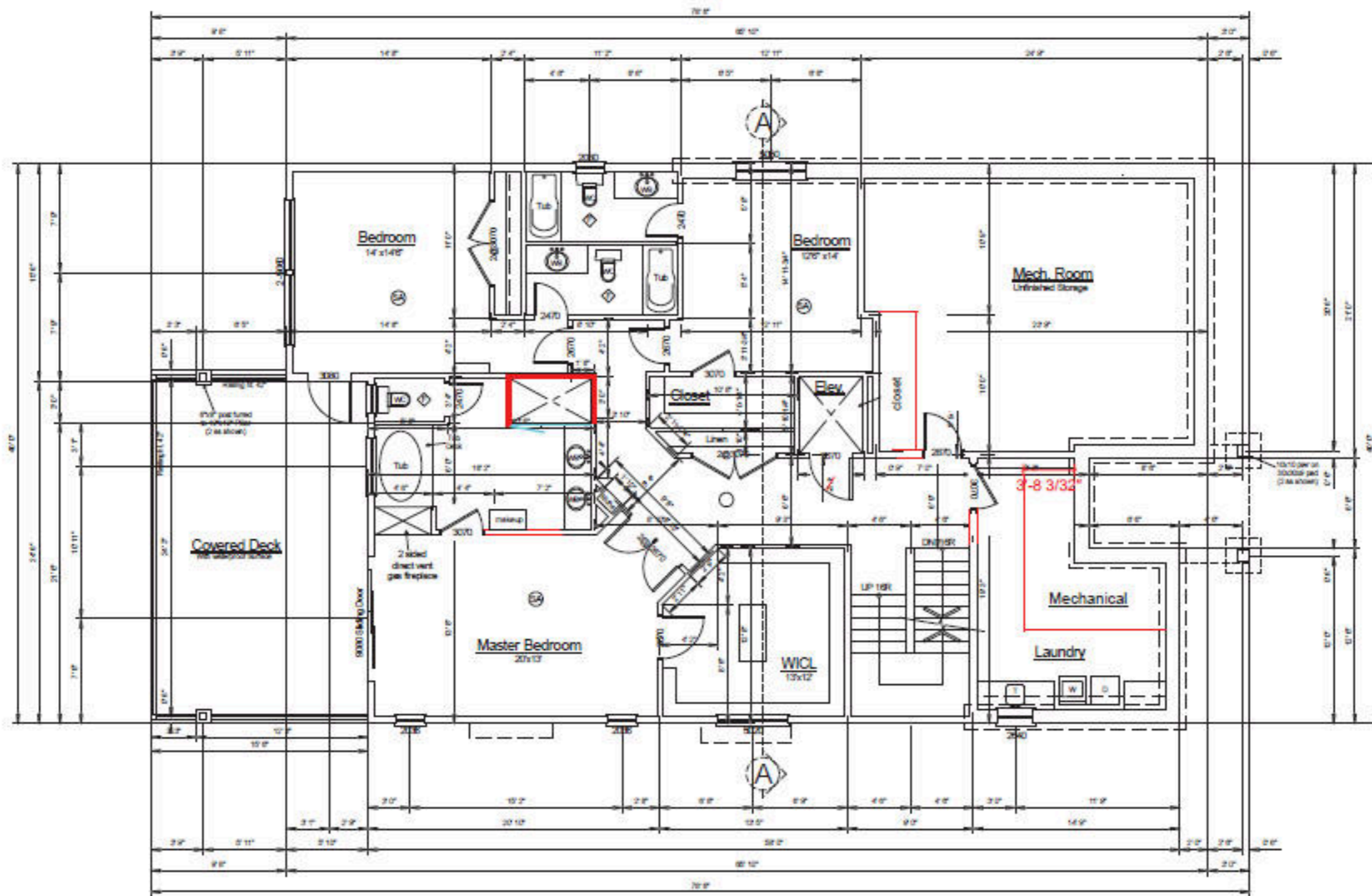


Note: these drawings conform to BCBC 2012 edition
 Do not scale prints as reproduction can cause distortion in printed copy

Title: **Main Floor Plan**

Date: As of Use	Drawn: ca	Scale: 1/8" = 1'-0"	Sheet: 1 of 1
-----------------	-----------	---------------------	---------------

Project: **West Harbour Resort LLP
 Lot 5
 1528 Harbour Pointe Lane**



Middle Floor Plan 1804 SF
 (9" CLG.) 525 SF Unfinished



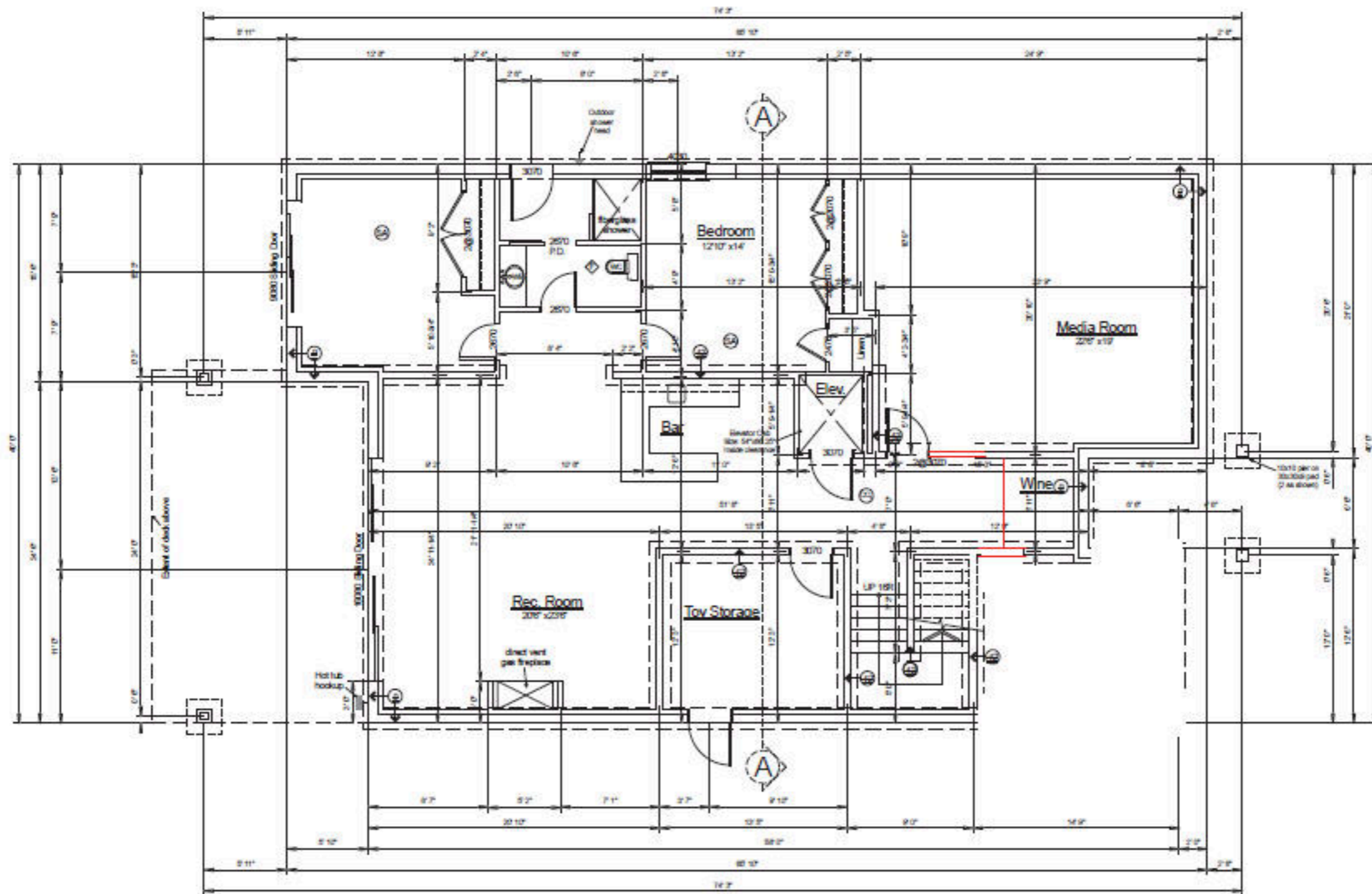
Note: these drawings conform to BCBC 2012 edition
 Do not scale prints as reproduction can cause distortion in printed copy.

Project:
 West Harbour Resort LLP
 Lot 5
 1528 Harbour Pointe Lane

Title:
 Middle Floor Plan

Date/Asst/Drawn/Scale/Sheet





Lower Floor Plan / Foundation Plan 2.410SF
(9'0" CLG.) Including Media Room



Note: these drawings conform to BCBC 2012 edition
Do not scale prints as reproduction can cause distortion in printed copy.

Project
West Harbour Resort LLP
Lot 5
1528 Harbour Pointe Lane

Title
Lower Floor /
Foundation Plan

Date: 01/15/12
Drawn by: [redacted]
Scale: 1/8" = 1'-0"
Sheet: 001