



Kelowna Penthouse with oversize 2000+ sq. ft. roof top deck!

Custom, built-in fir planter boxes fully irrigated with established plantings. Quality synthetic turf on deck.

Double private garage leads to lower level entrance.

Private elevator access to penthouse floor.

Floor to ceiling, wall to wall windows provide an abundance of natural light plus expansive views of the private outdoor space, mountains and beyond!

A private oasis in the center of the highly desirable Pandosy Village.

Walk to shopping, the beaches and parks.

*Proudly Presenting*

---

2689 Gore Street

---



JANE HOFFMAN  
GROUP





**Features at a glance:**

Age: 2011  
 Finished Area: 2505 sq. ft.  
 Main: 2155 sq. ft.  
 Below Main: 350 sq. ft.  
 Bedrooms: 2  
 Bathrooms: 3  
 Garage: Attached Double  
 Exterior: Brick, Stucco  
 Heating: Natural Gas forced air, Heat Pump, in floor radiant heat run by a boiler, electrical heating in the storage, garage and downstairs areas  
 Cooling: Central Air  
 Fireplaces: 2 Gas Fireplaces  
 Strata Fees: \$ 656.13  
 Storeys: 3  
 Water: Municipal  
 Sewer: Sewer  
 Laundry: In Unit

**Inclusions:** Panasonic microwave, 6 burner wolf stove/oven, Sub Zero professional series refrigerator, Bosch dishwasher, Nilfisk CV25 central vacuum and attachments

**Exclusions:** Washer & dryer

**Room Sizes**

Living Room: 21 x 15  
 Kitchen: 17 x 11'6  
 Dining Room: 17 x 11'6  
 Pantry: 11'6 x 5  
 Master Bedroom: 15 x 12  
 Ensuite - Full: 15 x 9  
 Bedroom: 13'2 x 12  
 Ensuite - Full: 12 x 5  
 Den / Office: 13 x 7  
 Bathroom - Half: 5 x 5  
 Den / Office: 10 x 7'6  
 Laundry: 9 x 5  
 Storage: 15 x 7  
 Deck: 48 x 15'6  
 Deck: 24 x 24  
 Deck: 35 x 22

PLEASE NOTE: Although the information herein is believed to be from reliable sources, prospective buyers should satisfy themselves as to its accuracy. All measurements are approximate.





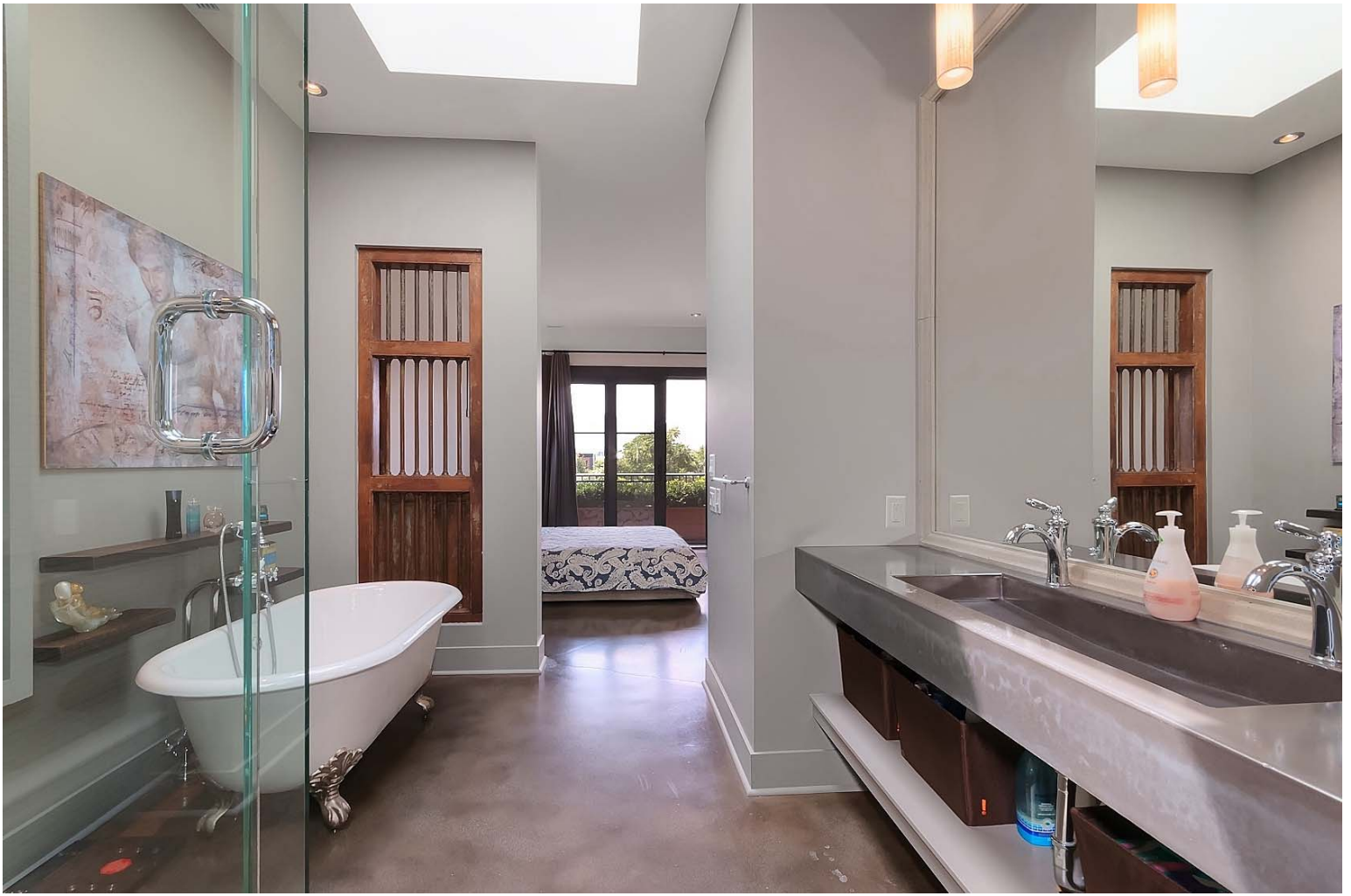












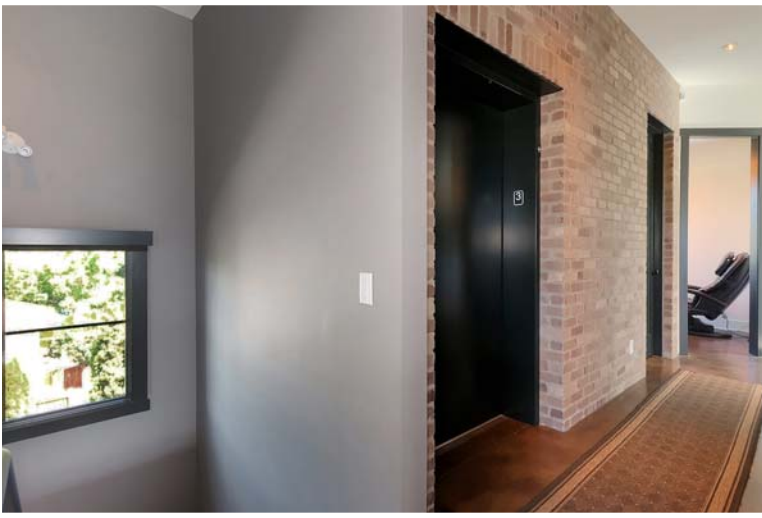


















# Detailed Information

## Exceptional Features

- Exquisite penthouse in sought after area of Kelowna's Lower Mission
- This location is a short stroll to many sandy beach access, quaint boutiques and fine dining.
- Direct elevator access from your own private entrance
- Large roof top deck features custom high gloss fir planter boxes that line the outdoor oasis. Careful and thoughtful planting ensures a private garden setting
- Roof top deck is an entertainers dream! Fully covered dining room adjacent to an outdoor modern linear fireplace with large lounging space
- Roof top deck has shower hook up ready if desired
- Heated deck storage room. Roughed in for hot tub.
- Extensive full height windows run the length of the main floor open concept living area creating a bright interior
- Oversized sliding doors seamlessly transition to the exceptional outdoor deck
- Home styling blends crisp and modern with the warmth of natural wood and stone elements
- Double garage features Polyaspartic coating on the floor, scratch resistant, high tolerance to heat, high gloss finish and easy clean finish
- The garage features upper storage racks, wall bike hanging racks and steal upper storage cabinets

## Entry

- A private landscaped walk way leads to elevator
- Double garage has direct access to the elevator
- There is also a traditional walk in entry with stairs to the apartment
- 3 lockers off the garage for shoe and coat storage

## Great Room

- Open concept great room, kitchen and dining all positioned to view the outdoor living areas, great room lounging area faces the fireplace
- Brick framed gas fireplace with distressed wood beam mantle
- Flanking the fireplace is two sets of sliding doors

## Kitchen

- Mixed toned cabinetry provides ample storage plus more storage in the full walk in pantry with organizers
- Stainless steel pulls and wood lined interior cabinets and drawers

- Large centre granite island seats 4 people comfortably, illuminated by oversized lantern styled lighting
- Convenient wine storage within the island
- The back wall of the kitchen features the same linear tile used in the great room creating a pleasing, cohesive design element
- A splash of color adds interest to the glass backsplash behind the professional series gas stove

## His and Hers Offices

- Private corner office
- Newly installed custom built in cabinets with frosted glass doors
- Frosted chandelier
- The 2<sup>nd</sup> office is located off kitchen and great room
- Hidden from great room by a privacy wall that features a unique inset barn styled window
- Bright space provided by one of the homes many skylights
- Custom built in desk with drawers, granite top and open shelving above

## Master Bedroom

- Spacious master bedroom features private access to outdoor deck
- Full walk in closet with custom organizers
- Access to the laundry room
- The ensuite bathroom showcases unique finishing details
- Custom cast concrete counter features a poured oversized sink with 2 faucets
- Naturally illuminated by skylight, glass pendant lighting over sink and recessed lighting
- Stand-alone soaker tub with stainless steel claw feet
- Seamless glass shower features mosaic tiled bench and 2 shower heads

## Bedroom #2

- Set on opposite wing to the master bedroom
- Closet features full organizers
- Sliding glass doors open to Romeo and Juliet balcony
- Attached 3-piece ensuite bath, walk in shower with bench, rain shower head and wand shower

## Baths

- 2 piece powder room
- 5 piece master ensuite bathroom
- 3 piece ensuite bathroom in 2<sup>nd</sup> bedroom

## Laundry

- Convenient wash sink in laundry
- Open shelving above





Dean Simonelli



Jane Hoffman

Telephone: 250-860-7500  
Email: [jane@janehoffman.com](mailto:jane@janehoffman.com)  
Website: [janehoffman.com](http://janehoffman.com)

  
**JANE HOFFMAN**  
GROUP

