



Simply spectacular opportunity to own level lakeshore in one of Kelowna's finest neighborhoods.

Build your dream home on the shores of Okanagan Lake on sought after Hobson Road. Proposed building plans available.

Estate sized 0.42 acre lot. Sunny southwest exposure.

Sandy beach with 76 feet of water frontage, updated dock.

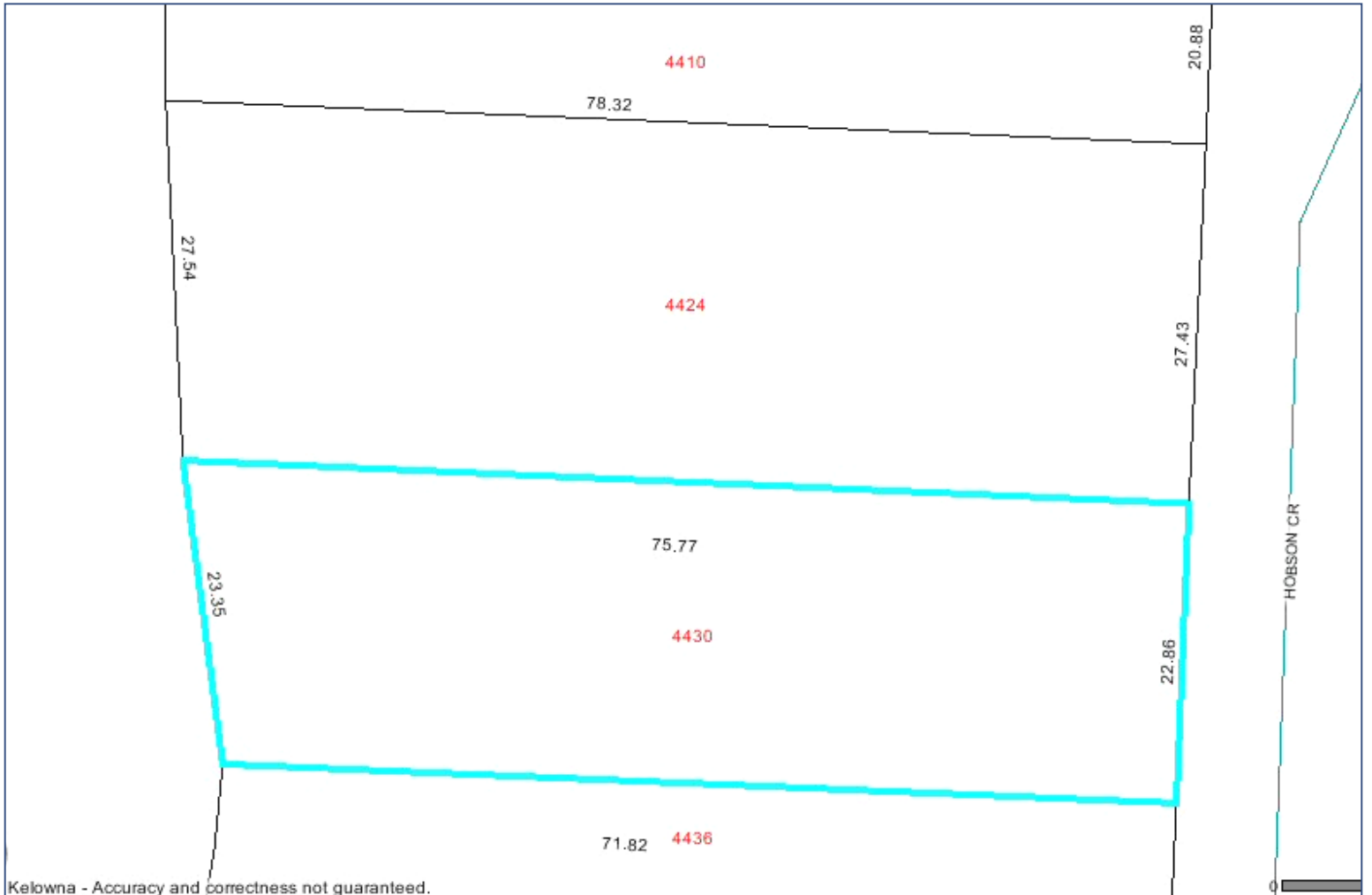
Lighting on dock, beach gate and fence.

Proudly Presenting

4430 Hobson Road

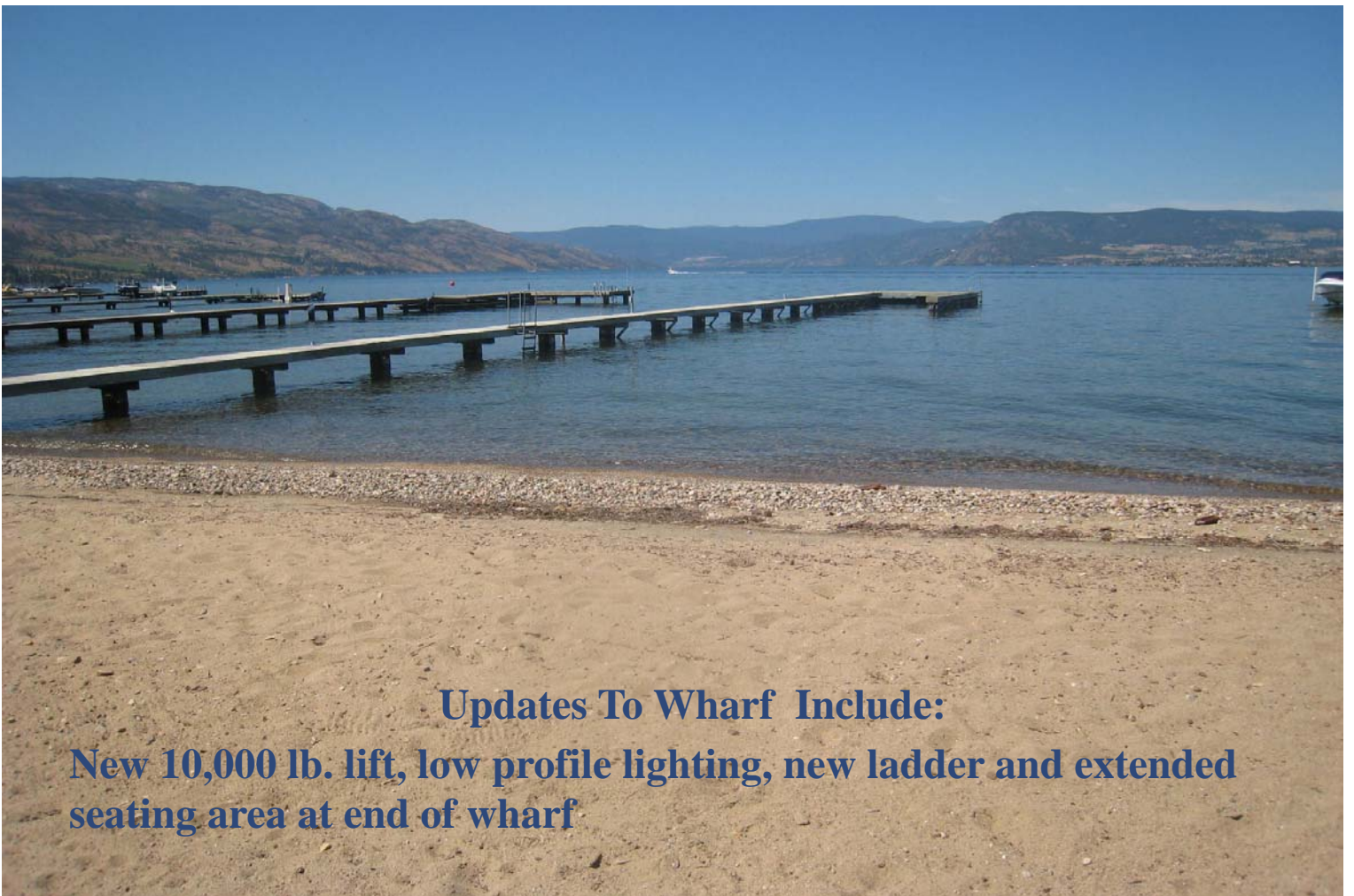


JANE HOFFMAN
GROUP



Kelowna - Accuracy and correctness not guaranteed.







Features at a Glance

Lot size: 0.42 acres, 76.6 ft. x 248.58 ft. with 76 ft. of water frontage

Taxes: \$16,390.00 for 2011

Services Available: Gas, Power, Sewer, Phone, Water, Cable TV

PLEASE NOTE:

Although the information herein is believed to be from reliable sources, prospective buyers should satisfy themselves as to its accuracy. All measurements are approximate.



Telephone: 250-860-7500

Email: jane@janehoffman.com

Website: janehoffman.com

Kristy Huber

Jane Hoffman



JANE HOFFMAN GROUP